

Railbelt Electrical Utility Related Organizations

Railbelt Utilities

GVEA, MEA, Chugach, HEA and City of Seward

GVEA – Golden Valley Electric Association – www.gvea.com 36,000 members, 46,000 meters. Serving from Delta-Greely through Fairbanks, out the Steese Hwy and Elliot, down the Parks Hwy. to Cantwell.

Residential Rates: \$22.50/mo. Utility charge \$ 0.12726/kwh Fuel and Purchased Power \$0.12726/kwh

MEA – Matanuska Electric Association – www.mea.coop 56,000 members serving Parks and Glenallen to Knik Arm Bridge, Chugiak, Sutton. Generation: 91% natural gas with hydro and a little solar.

<https://www.mea.coop/innovation>

Residential rates – 4th quarter 2022 \$ 13.00/mo. + \$ 0.12893 kwh energy + \$ 0.07229 kwh = \$ 13.00 + \$0.2122/kwh.

CEA - Chugach Electric Association – chugachelectric.com now includes Anchorage urban area with purchase of Municipal Light and Power in 2020 from Anchorage Municipality. Generation: 83% natural gas, 15% hydro, 2% wind (Fire Island) in 2021. 93,000 members, 113,200 meters.

North District

Residential Service Rates

| | |
|---|-----------------|
| Customer charge | \$13.62/month |
| Energy Charge | 15.274¢ |
| Fuel Charge | 4.025¢ |
| Purchased Power Charge | 0.702¢ |
| Fire Island Wind Renewable Energy Adj.* | 0.132¢ |
| BRU Contributed Capital Rebate | (2.300)¢ |
| Restricted Rate Reduction Rebate | (1.232)¢ |
| Regulatory Cost Charge | 0.0893¢ |
| Gross Revenue Tax | 0.05¢ |
| Total per kWh | 16.7403¢ |

South District

Residential Service Rates

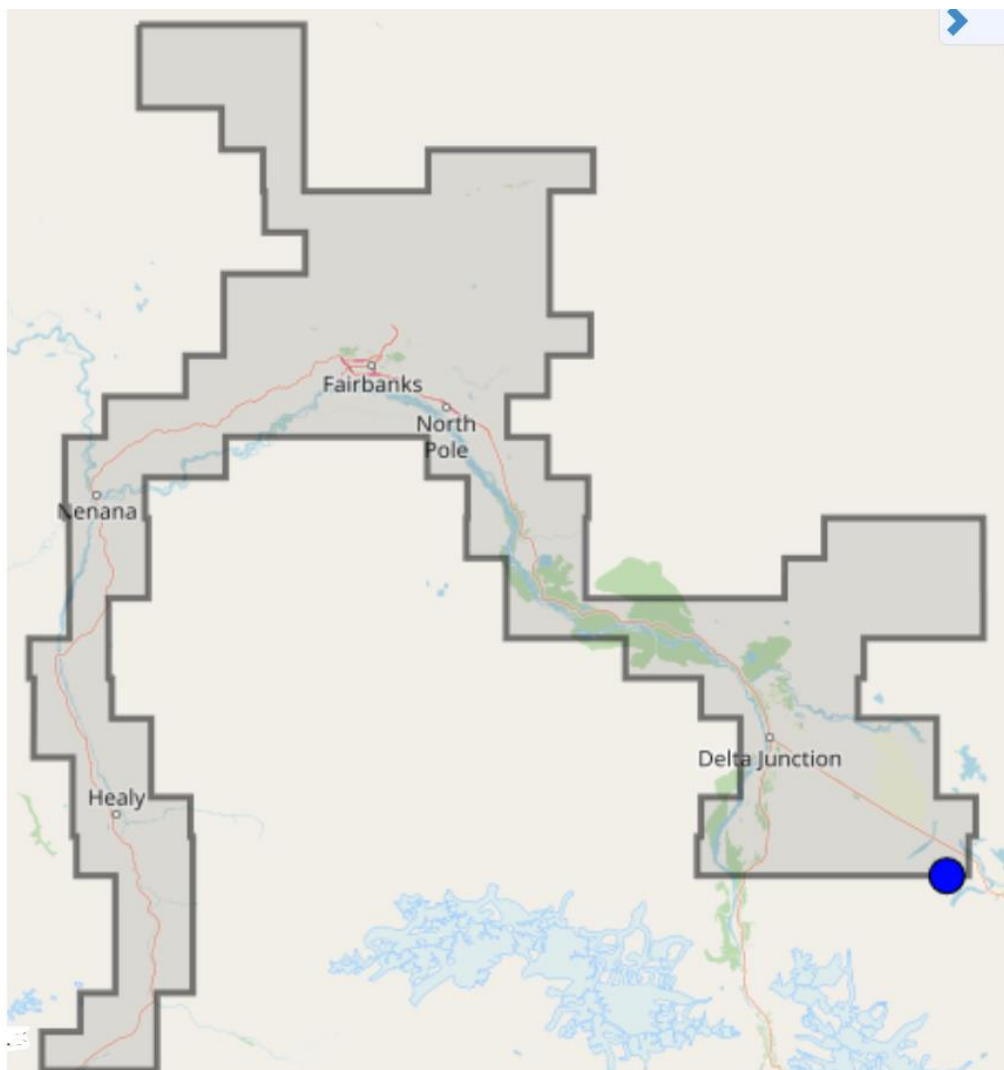
| | |
|---|-----------------|
| Customer Charges | \$8.00/month |
| Energy Charge | 13.508¢ |
| Fuel Charge | 4.025¢ |
| Purchased Power Charge | 0.702¢ |
| Fire Island Wind Renewable Energy Adj.* | 0.132¢ |
| BRU Contributed Capital Surcharge | 1.497¢ |
| Regulatory Cost Charge | 0.0893¢ |
| Gross Revenue Tax | 0.05¢ |
| Total per kWh | 20.0033¢ |

HEA Homer Electric Association www.homerelectric.com 25,000 members, 36,000 meters. Serving southern Kenai peninsula and Seldovia area. Generation mostly natural gas with additional hydro. Just installed a 46mw / 2 hr Tesla BESS.

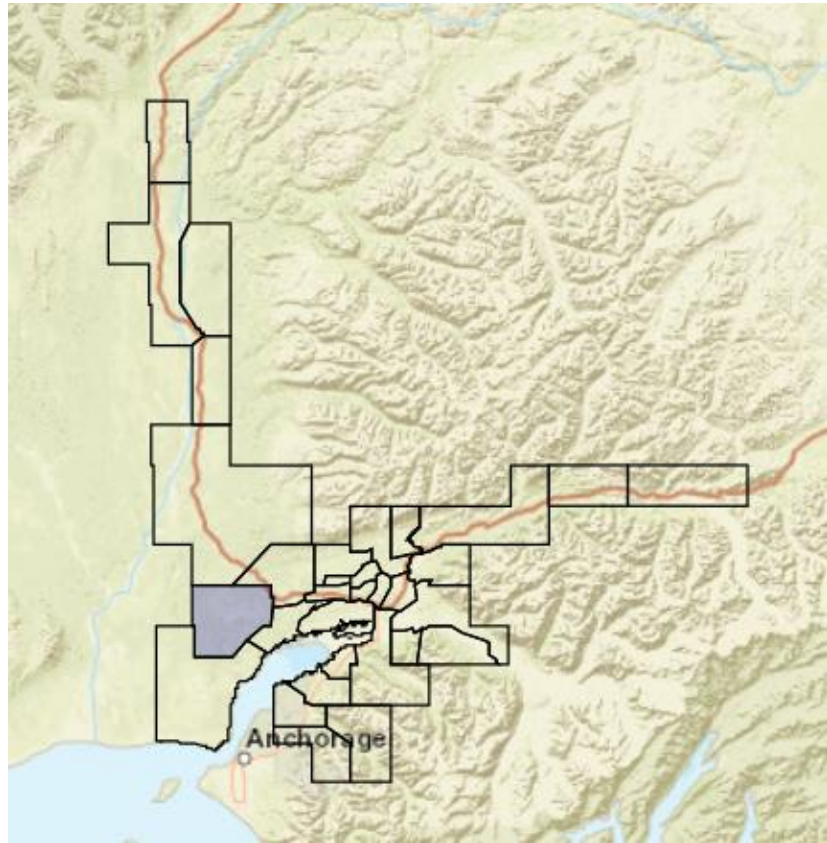
Residential Rates: Customer charge/mo \$20.00 Energy charge \$ 0.16077 Cost of Power \$ 0.07754 . If billing is less than 150 kwh, an additional facility charge is \$24.12/mo. This covers summer only and other low usage residential units.

City of Seward – www.cityofseward.us/community/residents/public-utilities buys power from Chugach, has diesel backup generation, serves almost 3,000 meters. Rates Jan 2022 - \$22.10 customer charge, \$.1217/kwh summer, \$.0851/kwh winter + Chugach fuel charge of \$0.04025/kwh as of Oct. 1, 2022.

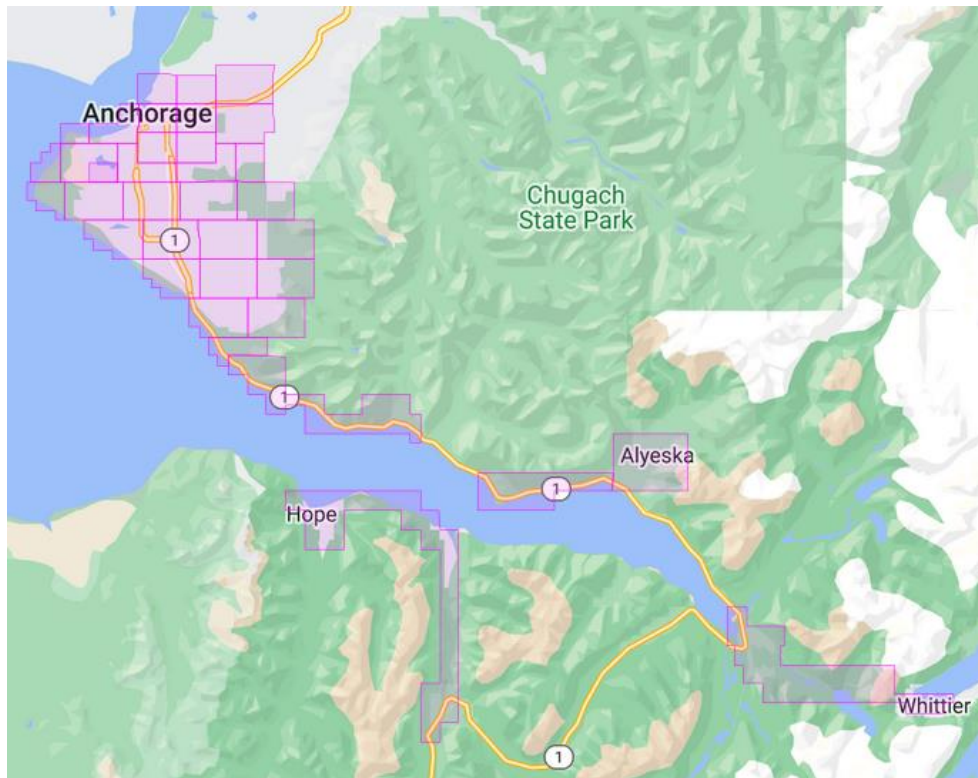
GVEA service area



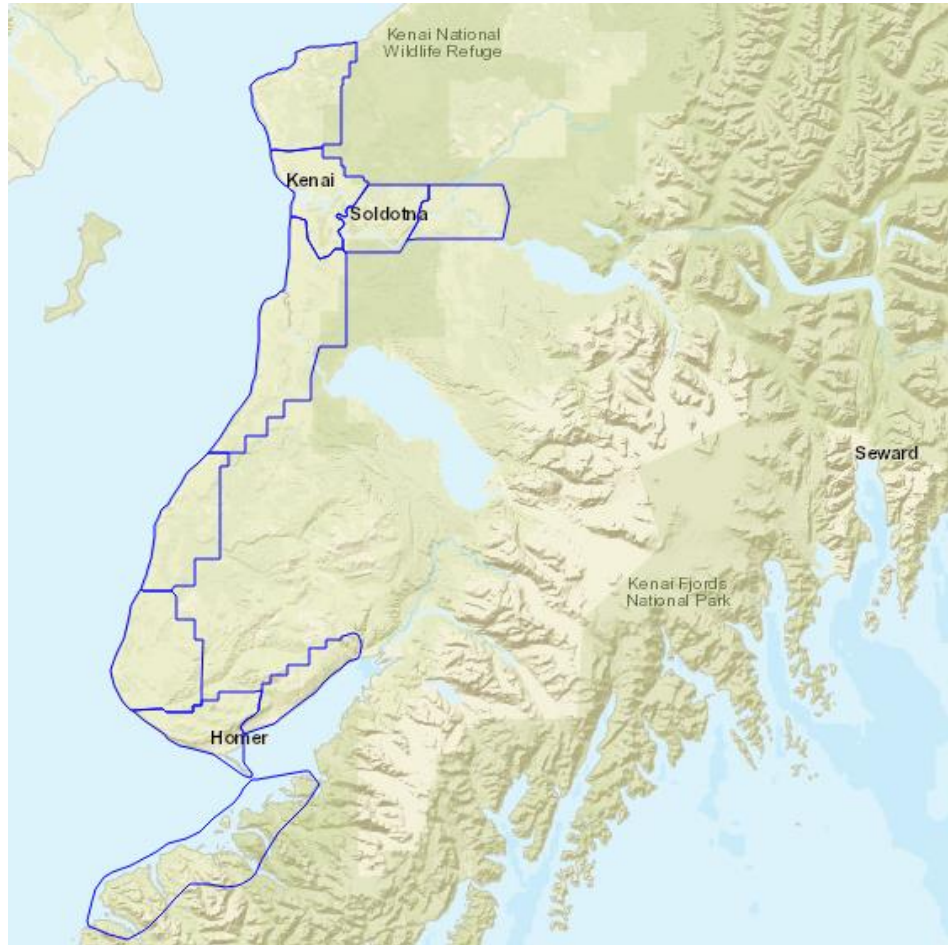
MEA service area



Chugach Electric service area



Homer Electric service area



Other Alaskan Electric Related Organizations

APA - Alaska Power Association www.Alaskapower.org serves as the trade organization for all electric utilities in Alaska. Most are members of APA.

AEA – Alaska Energy Authority www.akenergyauthority.org/ is the Alaska state agency that constructs administers most energy related projects with state or federal funding (when granted to the state). Their portfolio is wide. They also share some staff and board with AIDEA – Alaska Industrial Development and Export Authority. Less confusing than when it was called the Alaska Power Authority or APA, which conflicts with the prior mentioned organization.

IMC – Intertie Management Committee – www.akenergyauthority.org/What-We-Do/Railbelt-Energy/Alaska-Intertie/Intertie-Management-Committee under the AEA, manages transmission assets of the state, such as the intertie that connects between Willow and Healy, serving GVEA. Members are AEA, GVEA, MEA and Chugach. With AEA purchasing transmission assets on the upper Kenai, it may be that HEA will also participate, about which I will request clarification.

BPMC – Bradley Lake Management Committee - www.akenergyauthority.org/What-We-Do/Railbelt-Energy/Bradley-Lake-Hydroelectric-Project/Bradley-Lake-Project-Management-Committee under AEA, this committee is composed of AEA and all Railbelt utilities. Responsibilities are management, operation,

maintenance, and improvement of the Bradley Lake Project. Completed in 1991, Bradley Lake Project is the largest hydro in Alaska and was funded 50% by bonds and 50% by the State of Alaska. Each Railbelt utility has been paying off those bonds and now paying off the state's contribution in the amount of about \$12 mm/year prorated according to their share of the energy resource. An opportunity has opened up to fund transmission and storage improvements to the project that will be covered by that \$12 mm/year. Those improvements could also tie into the infrastructure funding of the BIL.

RRC – Railbelt Reliability Council alaskapower.org/rrc This is the ERO that was mandated by the Legislature with SB 123 and which the RCA just approved. This group of utilities and external stakeholders are responsible for setting clear and open standards for access to the Railbelt transmission network and seeing to best practices for physical and cyber security. They have several committees listed on the website and are a public entity.

ERO – Electric Reliability Organization - the generic term for what the RRC is becoming,

ARCTEC – Alaska Railbelt Cooperative Transmission & Electric Company <https://arctec.coop> is a voluntary Railbelt consortium of the Railbelt utilities who choose to participate in facilitating generation and transmission service needs in the Railbelt region. With the formation of the RRC covering their mission, they are currently on hiatus after commissioning an important study of how to create an ERO.

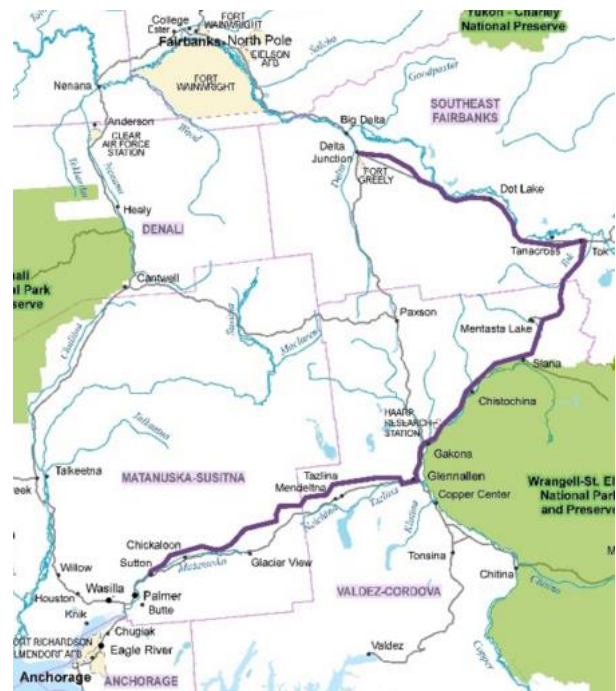
RCA – Regulatory Commission of Alaska rca.alaska.gov administers utility issues on behalf of the State of Alaska. Some utilities are economically regulated by the RCA (RCA approves rates) or not (RCA doesn't approve rates), but all utilities have some responsibility to the RCA by law and general regulation.

Denali Commission www.denali.gov is an independent federally funded agency designed to provide critical utilities, infrastructure, and economic support throughout Alaska for remote/rural communities

Road Belt – Extension of transmission from Sutton to Glenallen, tying into Copper Valley Electric and Tok, then up to GVEA service area at Delta Jct. Rough estimate \$500 million, unlikely to be built without Dept. of Defense support. A reconnaissance study was funded and released by the Denali Commission.

AML – Alaska Municipal League – this is the organization that serves local governments in Alaska. They are heavily engaged in providing help with projects contained in the BIL and IRA.

State of Alaska – Besides the AEA, the governor has an infrastructure coordinator for the BIL/IRA named Miles Baker. The governor also just established the Office of Energy Innovation, “operating within the Office of the Governor, will develop policies to support the centralization of the state's efforts to provide safe, sustainable, affordable, and reliable energy resources for all Alaskans.”



1Proposed Roadbelt transmission project

REAP – Renewable Energy Alaska Project – <https://alaskarenewableenergy.org/> is an advocacy non-profit that has been most active in promoting renewable energy in Alaska. A member of REAP serves on the RRC.