



# ***Kuskokwim Campus Master Plan***

University of Alaska Fairbanks

## **2006**





# ***Kuskokwim Campus Master Plan***

*University of Alaska Fairbanks*

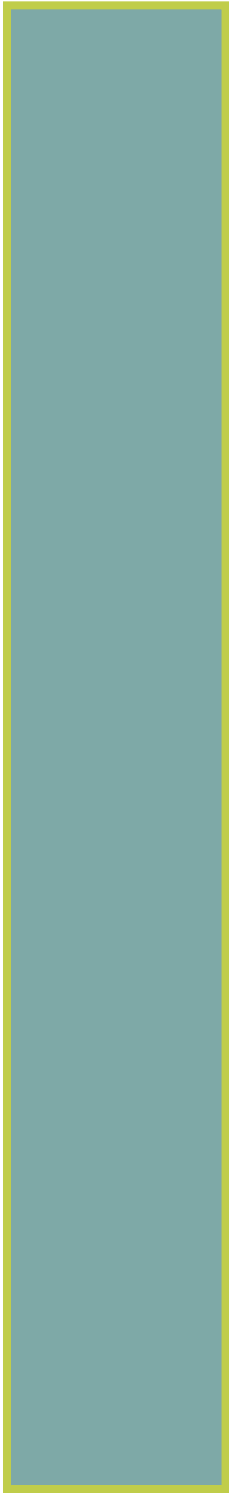
## **2006**

*Planning Team:*

*University of Alaska Fairbanks Master Planning Committee*

*USKH, Inc.*





## Introduction: CRCD Master Planning

The College of Rural and Community Development (CRCD) is one of the eight major academic units of the University of Alaska Fairbanks (UAF). The college serves a culturally diverse and geographically scattered student body through the services of five rural campuses and the Fairbanks based Tanana Valley Campus. The Chukchi Campus in Kotzebue serves the upper northwest area of the state; the Bristol Bay campus located in Dillingham serves the southwestern area; the Interior-Aleutians campus serves the Interior and the Aleutians, the Kuskokwim campus in Bethel is the hub of the southwest Delta and finally; the Northwest Campus serves Nome and the outlying communities in the Bering Straits region of Alaska.

CRCD houses the statewide Cooperative Extension Service, Center for Distance Education, Department of Alaska Native & Rural Development, Developmental Education Department, statewide Early Childhood Education program and Rural Student Services and Rural Alaska Honors Institute, The CRCD service area covers two-thirds of Alaska and serves 160 communities.

The CRCD campuses provide general education at the certificate and associate degree levels, vocational technical education, developmental courses, baccalaureate and a master's degree in Rural Development, and many noncredit outreach publications, workshops and seminars through the Cooperative Extension Service.

As CRCD approaches its 20-year anniversary of the University of Alaska community college system restructure, we face the challenge of renewing the rural campus physical environments. To address these challenges, the University of Alaska Fairbanks, Facilities Services, Division of Design and Construction contracted consultants to develop conceptual Master Plans for each rural campus.

After a year of collaborative planning activity involving campus faculty, staff and community leaders and councils, the College of Rural and Community Development Executive Dean is proud to endorse the rural campus Master Plans. The development of these new plans was an ambitious undertaking that demanded much time, effort and creativity on the part of many people.



*Dean of CRDC  
Bernice Joseph*

The primary purpose of the Campus Master Plans is to define a framework of opportunities within which the campuses, university, city, and state leaders can make future decisions on upgrading existing systems and accommodating new facilities, thus creating an exciting and inviting campus environment.

The Campus Master Plans address the challenges and opportunities before us, including: a rising demand for more sophisticated and technologically enriched academic facilities, a need to address the growing deferred maintenance backlog, and the need for collaborative planning. CRCD is not alone in addressing these challenges.

Ongoing fiscal challenges, however, limit unilateral options. The Campus Master Plans identify the importance of strengthening existing partnerships as well as building new relationships with alumni, donors, private developers, neighborhoods, and city, state and federal policy-makers. The Campus Master Plans are the first steps in comprehensively identifying future development opportunities. Implementation will require further campus and community investigation and discussion. It is our hope that the Campus Master Plans will serve as a beacon in guiding physical development opportunities into the next century.

CRCD campuses continue to make lasting differences in the communities they serve. In 2005 the community campuses combined had over 300 graduates, the majority of which were in high demand job areas. We continue to build key partnerships with school districts, health corporations, tribal, municipal and local governments. It is through these partnerships that we are able to offer quality training and community workshops that result in a better quality of life for our communities.

With Higher Education in the United States undergoing significant transformations, new ways of receiving and disseminating information, innovative teaching techniques, and state-of-the-art initiatives require new facilities and environments. These campus Master Plans directly address these issues and post secondary education for our students.

Bernice Joseph, Executive Dean  
UAF College of Rural and Community Development



# Table of Contents

## ***Introduction: CRCD Master Planning***

### **1 *Executive Summary***

Background, Vision, Purpose, and Key Goals and Actions of the Campus Master Plan ..... 1 - 1

### **2 *Master Planning Process***

Purpose, Key Academic Planning Goals, Key Facility Planning Goals, Key Issues and Vision for the Future, Process and Participants, Background ..... 2 - 1

### **3 *Introduction to the Campus***

Campus Information, Student Profile, Overview of Academic and Public Service Programs, Continuing Education/Professional Development ..... 3 - 1

### **4 *Development of the Campus***

Planning history and development of the campus ..... 4 - 1

### **5 *Facility Condition Survey***

Physical conditions of the campus to be addressed by the campus master plan ..... 5 - 1

### **6 *Trends and Issues in Space Planning***

Space crunch, Expansion of space, Academic program trends and anticipated facilities needs, Programs, Staff ..... 6 - 1

### **7 *Campus Master Plan Development***

Analysis of existing conditions and opportunities for campus change ..... 7 - 1

### **8 *A New Campus Plan***

Actions to achieve campus master plan goals ..... 8 - 1

### **9 *Implementation and Phasing***

Steps and schedule for implementing actions of the campus master plan ..... 9 - 1



## Table of Contents *(continued)*

### **Appendix 1**

Who KuC Serves/ What KuC Offers ..... A1 - 1

### **Appendix 2A, 2B**

Survey Forms ..... A2 - 1

### **Appendix 2C**

Survey Results ..... A2C - 1

### **Appendix 3**

Regional Population ..... A3 - 1

### **Appendix 4**

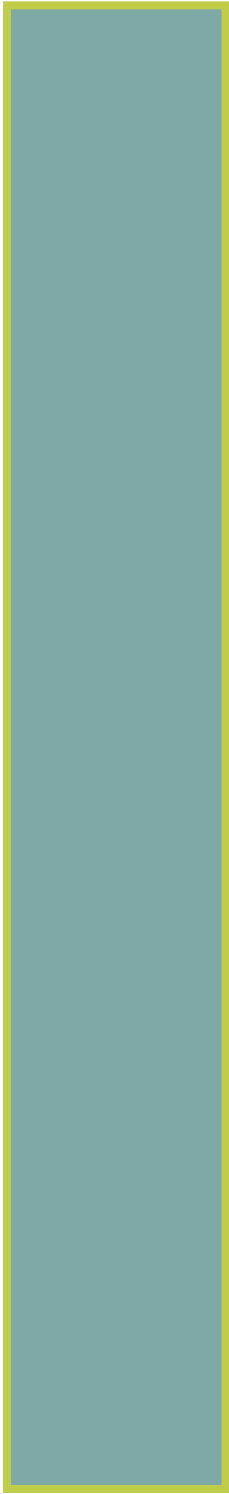
Organizational Chart ..... A4 - 1

### **Appendix 5**

Space Analysis ..... A5 - 1



**Kuskokwim Campus**  
UAF - College of Rural and Community Development



# Executive Summary



**Kuskokwim Campus  
Bethel, Alaska**

# 1

**University  
of  
Alaska  
Fairbanks  
2006**





# 1. Executive Summary

## *Introduction*

This master plan for University of Alaska Fairbanks, Kuskokwim Campus (KuC) reviews the adequacy of the current physical plant and recommends upgrades and replacement to align with the academic plan for the next two decades. The preparation of a master plan for the KuC is designed to guide its future development, while recognizing the local community and its importance thereto, as well as recognizing the regional connections, and the connection to the University of Alaska Fairbanks.

As a two-year branch campus, KuC offers an array of certificate and associate degrees and selected bachelors and masters degrees. Tentative academic plans are to solidify partnerships with other entities to enhance vocational education offerings, expand selected two-year degrees to four-year degrees, and create new programs. For example, KuC is slated to add an important four-year, bachelor's degree, Yup'ik Language and Studies, in the next two years.

Briefly, the 12 to 35 year-old buildings at KuC range from inadequate to moderately adequate, but all are perceived to need renewal, renovation and additional space to meet the current needs of the region. The plan recommends: stepping up deferred maintenance to preserve the usefulness of current buildings; major renewal and reconfiguration of space; creating additional space, such as adding a second-floor to the ABE Center building; extending the north east section of the main building; and finally, making plans to replace the main campus building. Some of KuC future space and educational needs can be met through partnerships with local and regional entities that arrange for shared use of faculty and classroom space.

Development of the campus plan will be accomplished with phasing for short and long terms.



## ***Goals***

Development of the Kuskokwim Campus in accordance with its mission statement will be facilitated by a campus which:

- Provides academic credentials and promotes links to University academic programs.
- Provides efficient and attractive facilities for the students, faculty and staff.
- Provides improved and expanded “on-line” infrastructure for distance learning.
- Develops a positive connection between the community and the campus.
- Reinforces “partnerships” for mutual benefits; and respects and strives for regional connections

## ***Actions***

- Expand existing facilities both in the short term and long term 20-year period.
- Provide additional adequate functional space for faculty and staff.
- Provide additional adequate appropriately sized seminar rooms for distance learning students.
- Provide additional multi-use space, specialized space, and standard classroom space.
- Site improvement and pave parking.



# Master Planning Process



**Kuskokwim Campus  
Bethel, Alaska**

# 2

**University  
of  
Alaska  
Fairbanks  
2006**







## 2. Master Planning Process

### *Purpose*

The University of Alaska Fairbanks and the College of Rural and Community Development (CRCDD), in moving towards envisioned growth and expansion of educational programs, has prescribed a master planning effort for each rural campus to assure that the requisite physical facilities will be available to support future academic goals.

KuC views the master and academic plans as guides for growth and effective response to regional higher educational and professional development needs. In embracing the community college mission for UAF in the Yukon-Kuskokwim Delta region of Alaska, KuC has to be responsive to emerging needs in the region in a timely manner. The Spring 2006 community and KuC survey data will serve as the springboard for future planning and outreach.

In the future, periodic invitations for input from the region along with formal direction from the KUC advisory council, and dialogue with CRCDD will regularly inform KuC master and academic planning efforts. These plans are ideally designed to address the standard college core requirements and dynamic educational and training needs that face community and regional partners.

### *Key Academic Goals*

Development of the Kuskokwim Campus in accordance with its mission statement will be facilitated by a campus which:

- The primary goal is to provide academic credentials. KuC will promote and link to University academic programs in order to meet individual training and employment needs.
- KuC has and will continue to respond to the needs of under-prepared students as well as the college-ready students for their successful completion of certificates/degrees at KuC and at other universities.
- KuC is geographically located at the center of Yup'ik/Cup'ik culture—the campus needs



to continue to create a Center to house academic, social and community programs and research to support and celebrate the vitality of Yup'ik/Cup'ik language and culture in the Yukon-Kuskokwim delta.

- KuC endeavors to employ faculty and staff with the highest credentials and credibility to serve the region's academic, training and professional development needs.
- KuC will provide access to higher education to all Y-K Delta residents.

### ***Key Facility Planning Goals***

Development of the Kuskokwim Campus in accordance with its mission statement will be facilitated by a campus which:

- The primary goal is to establish a vision for physical facilities and infrastructure that will support long-term educational goals.
- Identify crucial decisions and opportunities and identify the needs that need to be satisfied by the future campus facilities.
- Establish a phased plan for short-term implementation of improvements and expansion of the existing facilities.

### ***Key Issues and Vision for the Future***

Improvement and expansion of “on-line” infrastructure with appropriate small-group seminar type space is a key facet of the campus, which is committed to distance learning.

- The current site limits major horizontal expansion of facilities for future growth; expansion within the existing building with the addition of a second floor is a key issue.
- Development of additional vocational technical opportunities through new facilities or partnerships will be required to meet campus objectives.



Addition of residential facilities for married students, faculty and itinerants at the campus will expand future educational opportunities for potential students and will enhance the ability to fill open faculty positions.

## ***Process and Participants***

To facilitate and develop the master plan for the Kuskokwim Campus, the University of Alaska Fairbanks (UAF) contracted a consultant, USKH Architects Engineers Surveyors and Planners, to assess current conditions and program needs, and develop conceptual level planning guidelines and options for the campus. The main campus is located at Bethel, Alaska. The development of the master plan is an interactive process involving the campus staff and faculty, the UAF Division of Design and Construction (DDC), and the consultant. Cindy Ward is the UAF DDC Project Manager. Mary C. Pete, Director Kuskokwim Campus has been the prime UAF representative for the Campus and a major contributor to the master plan process.

An initial kick-off meeting and visioning work session was held in Bethel on March 8, 2006 with faculty and staff of Kuskokwim Campus, Steve Keller and Gary Hable of USKH and Cindy Ward of UAF DDC.

Subsequent to the kick-off meeting, Mary C. Pete, KuC Director coordinated the collection of information from the community and co-authored major components of this master plan document with respect to the Campus Information, Student Profile, Academic Overviews, Development Information, Planning Trends, and Program Trends.

The planning process began with convening a master planning committee of faculty, staff, particularly program coordinators, and a student representative in Spring 2006. After assessing what KuC offers and who it serves (see Appendix 1), the committee decided to collect input from the region's 46 communities, and current faculty, staff, and students about the physical plant as well as about what KuC should be doing to meet the higher education needs of the region. Two surveys were designed—one for communities and partners, and another for faculty, staff, and students (see Appendix 2a and 2b for each survey). The community survey was administered by telephone to K-12 representatives from each school, a sample from each community selected at random from the telephone book, including a one-percent sample of Bethel households (nearly 60 surveys), and KuC partners (19 surveys). The KuC survey was sent to all faculty, staff, and students electronically.



The master planning committee and the Operations Team of KuC (a majority of each group has overlapping membership) want to make community outreach in planning and service a regular feature of the future. This initial survey effort produced a baseline of data that will shape future invitations of opinions and suggestions. Refer to appendix 2C for detailed survey results.

### ***Background***

The KuC master plan outlines the future infrastructure of KuC as it lays out the academic plan to serve the Yukon-Kuskokwim Delta region of the state. The plan incorporates the campus strategic plan, the compact plan with the Dean of the College of Rural and Community Development, and the UAF strategic plan. It also takes input from the KuC advisory council, which has representation from the six K-12 district superintendents in the region, and regional organizations such as the health corporation, the Native/tribal organization, the military, the Bethel tribal organization, and the housing authority. Recent efforts to include representation on the advisory council from parents of students and alumni are in progress.

The master planning committee agreed that the surveys previously discussed were the most effective way to obtain information about KuC. This as an important opportunity to interact with the community regarding the future of KuC and what it should do to prepare for the higher education needs of the region. The community survey, which took approximately 15 minutes to administer, asked about respondent's experience with KuC, the perception and rating of that experience, the quality of the buildings, and about suggestions to better serve the community. Where needed, bi-lingual, Yup'ik speaking student workers administered the survey to monolingual Yup'ik speakers. Each surveyor had a script and a summary of all the certificate and degree program offerings, as well as occupational endorsements available at KuC. The students referred to these materials as they administered the survey in case respondents wanted more information before offering suggestions for additions or changes. The valuable information from the surveys provides much discussion and direction for KuC.

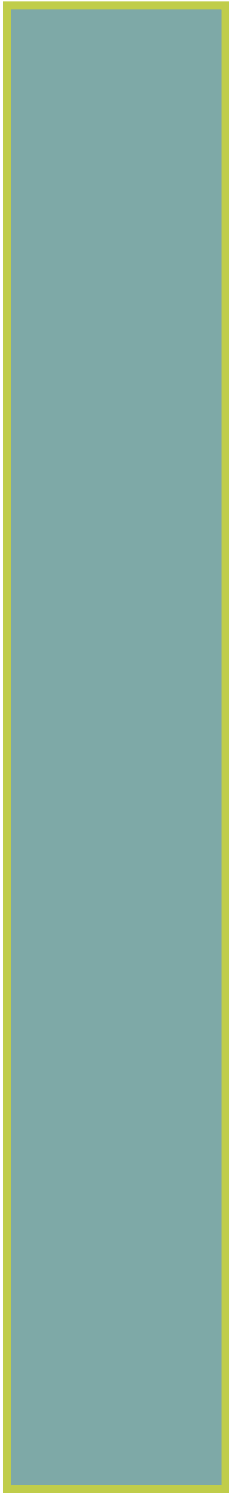
The KuC survey asked faculty, staff and students to rate each department with a brief explanation about the rating, asked about the adequacy of the physical plant, and requested recommendations for improvement of both the physical plant and academic services. The KuC survey was sent electronically to all faculty, staff, and students, and like the community



survey, could be completed by each respondent entirely anonymously—a confidential web address on a KuC LAN server collected completed surveys.

Analysis of information from both surveys is continual. The valuable information from the surveys will provide much discussion and direction for KuC beyond the completion of the master plan and academic plan. The master planning committee and the Operations Team of KuC (a majority of each group has overlapping membership) want to make community outreach a regular feature of future planning efforts at KuC. This initial survey effort will produce a baseline of data that will shape future plans and outreach, as well as invitations for evaluations and suggestions.





# Introduction to the Campus



**Kuskokwim Campus  
Bethel, Alaska**

# 3

**University  
of  
Alaska  
Fairbanks  
2006**







### 3. Introduction to the Campus

Campus information; Student Profile; Overview of academic and public service programs, Continuing Education / Professional Development

The Kuskokwim Campus (KuC) is growing and vital to the improvement of the communities in the region, with an excellent attitude toward learning.

#### *Campus Information*

The KuC in Bethel is the largest rural campus in the University of Alaska Fairbanks (UAF) system and the College of Rural and Community Development's (CRCD) branch campuses. KuC serves 46 remote Alaska Native, primarily Yup'ik/Cup'ik Eskimo villages with 56 tribes in a 57,000 square mile roadless area comparable to the state of Illinois with a regional population of nearly 25,000 people (see Appendix 3 for community listing and population information). The Kuskokwim Campus facility is physically located in Bethel, a regional hub community situated in Alaska's Yukon-Kuskokwim Delta, about 400 miles west of Anchorage. The service area includes census districts with the highest rates of poverty, youthfulness, and lowest rates of full-time permanent employment in the state and nation (U.S. Census Bureau data). The region also holds one of the last indigenous cultures and societies resident in their homeland and still speaking a vital Native language—Central Yup'ik/Cup'ik Eskimo.

The main campus is located on Akiak Drive with the cultural center located on Chief Eddie Hoffman Highway. KuC has four main units to its physical plant totaling over 51,084 square feet: an administrative and classroom building; the "YLC," the oldest building and once home of the Yup'ik Language Center; Sackett Hall, a 38-bed residential dorm; and the Yupit Piciryarait Cultural Center (YPCC), a multi-purpose meeting facility that houses a city-university consortium library and a museum operated by the Association of Village Council Presidents, Inc., the regional Alaska Native non-profit tribal organization.

As of spring 2006, the Kuskokwim Campus has 34 staff and 18 filled faculty positions (3 in ABE), 4 placed faculty in two CRCD programs of Rural Development and Cooperative Extension Services, as well as two UAF programs—School of Education, and Marine Advisory Program. Nearly one-quarter of all staff positions and faculty positions are grant-funded. The most recent organizational chart is in Appendix 4 .



**KU 101**  
Yup'ik Language Center



**KU 105**  
John Sackett Residence Hall



**KU 106**  
Yupit Piciryarait Cultural Center



**KU 102, KU 103, KU 104** Main Academic Facility

The campus offers the full complement of College of Rural and Community Development and University of Alaska Fairbanks certificate, Associate of Applied Science, Associate of Arts, and selected Bachelor of Arts and Master of Arts degree programs (see Appendix 1). Students can attain a bachelor's degree in Elementary Education, Social Work, and Rural Development, and a Masters degree in Rural Development. KuC is the only campus that offers the Yup'ik Language Proficiency certificate and AAS degree. Other programs include the freshman/sophomore Emerging Scholars Program, regional Adult Basic Education center, Workplace Basics program, continuing education program, and an Information Technology (IT) career pathways program.

KuC has expanded programs to meet the needs identified by agencies and the communities it serves. In the past five years it has certified and graduated students in Personal Care Assistant and Certified Nurses Assistant programs, medical billing and coding, nursing, information technology, early childhood education, boiler maintenance, and office management and technology. In addition enrollments increased in its regular associate and bachelor's degree programs.

Between 2000 and 2005 the number of students (unduplicated head count) enrolled in college level classes at KuC increased by 57.6 percent and college credit hour production increased by 143 percent (Table 1).

	<b>2000</b>	<b>2001</b>	<b>2002</b>	<b>2003</b>	<b>2004</b>	<b>2005</b>
<b>Number of Students</b>	599	411	385	633	1457	944
<b>Number of Credit Hours</b>	3476	3087	3610	5867	5966	4376

## **Student Profile**

The majority of KuC's students are Alaska Native—over 60 percentile. In spring 2006, the most common KuC student was part-time, female and older than the traditional college freshman or sophomore, non-degree seeking, and received financial aid (Table 2). Most part-time students also were employed. In Spring 2006, Sackett Hall housed approximately half of KuC's full-time students (25 of 58 students).

Total Headcount	322
Male / Female percentages	25% / 75%
Percent Alaska Native	65% (85%)*
Percent Under Age 25	16%
Average Age of Student	29**
Part-time / Full-time Enrollment	264 / 58
FTE Degree-Seeking Student Percentage	18%
Percent Part-time	82%
Estimated % Receiving Financial Aid	98%
<b>Source:</b> UA Banner system.	

\*Percentage in parenthesis is from KuC records.

\*\* (Estimate) for full-time students only.



As a two-year college campus, KuC serves as a feeder campus to other four-year degree campuses and as an important regional option for village students who are intimidated by the drastic move to an urban-based college campus. KuC serves many non-traditional students, who are older, have been or are employed, have families, and would like to improve their skills and earning power.

The campus has dormitory facilities, and students are either resident in Bethel, or attend class by distance delivery methods in cooperation with the Center for Distance Education at UAF.

### ***Overview of Academic and Public Service Programs:***

The certificate, occupational endorsements, associate, bachelor degree programs attainable at KuC are listed in Appendix 1. As mentioned, KuC offers a full complement of CRCD and UAF certificate, Associate of Applied Science, Associate of Arts, and selected Bachelor of Arts and Master of Arts degree programs. Students can attain 30-credit certificates in 8 programs, 60 plus credits associate degrees in 13 fields, a bachelor's degree in Elementary Education, Social Work, and Rural Development, and a Masters degree in Rural Development and Community Psychology. KuC is the only campus that offers the Yup'ik Language Proficiency certificate and AAS degree. KuC also offers 15 occupational licenses and certificates through its regular academic and Continuing Education-Professional Development Department. The ABE Center at KuC produces the largest number of GED graduates of any program in rural Alaska.

KuC offers on-campus, audio-conference, and real-time, on-line (Elluminate Live) classes both in-region and statewide as part of the CRCD family of branch campuses. Most course offerings are audio-conference, although a growing number are on-line or a hybrid of audio-conference and face-to-face intensives. The face-to-face intensives often generate a student housing crunch that has been met by leasing a privately-owned house (Kline House). KuC will not be extending the lease agreement for the Kline House after August 2006.

As regular partners, local agencies and organizations often compile groups of employees or prospective employees to request closed-cohort classes or certificate and degree program from KuC faculty. Increasingly, school districts are requesting "tech-prep" and dual-credit classes, particularly in pre-college or college level math and science.



## ***Continuing Education/Professional Development:***

The Continuing Education/Professional Development Department provides a variety of professional training services to the Bethel community and 46 surrounding villages in the YK Delta. Services include; Certified Public Managers Program, Level 1,2,3, occupational and vocational training, refresher and certification, Professional Development Training, seminars and workshops and customized business training resulting in creating a more productive and informed workforce.

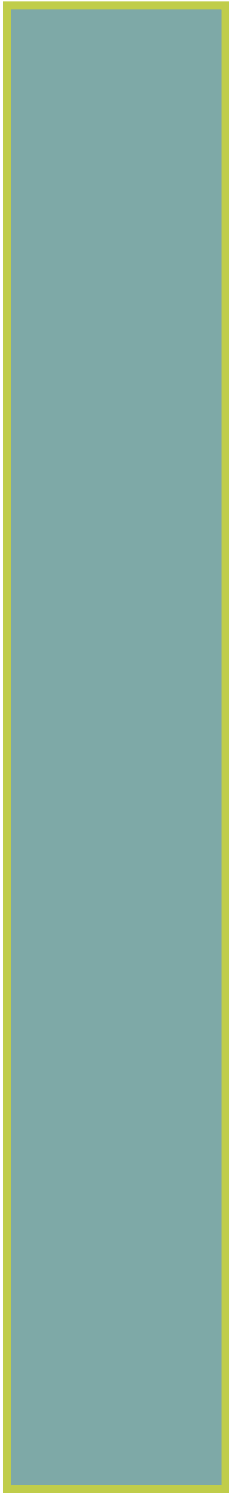
Students who satisfactorily complete requirements are awarded Continuing Education Units (CEUs). CEU is a national standard of measurement awarded by universities, professional societies, trade associations and other organizations. In many careers, CEUs lead to job promotion and pay increases.

Additionally, Continuing Education offers a variety of credit and non-credit classes for personal and professional growth. Topics range from Health and Fitness, First Aid/CPR, First Responder Wilderness Medicine, Aerobics, Judo, and Ballet to Native Yupik Dance, Traditional Native Arts, Quilting, Nutrition, Finances and Computer Skills.

Public Forums, Community Meetings, and Informational Events are scheduled through Continuing Education, with interagency coordination of public agencies, privates and local groups whenever possible.

In the most recent complete academic and fiscal year of 2004-05, over 625 students and participants registered in Continuing Education-Professional Development offerings, generating approximately \$35,000.





## Development of the Campus

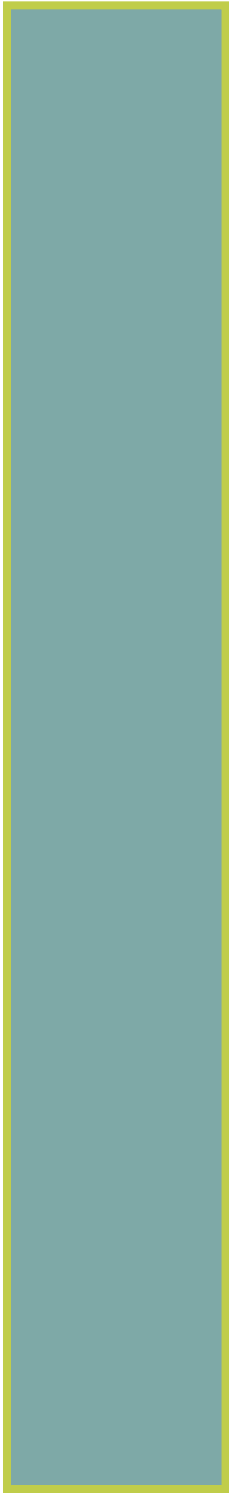


**Kuskokwim Campus  
Bethel, Alaska**

# 4

**University  
of  
Alaska  
Fairbanks  
2006**







## 4. Development of the Campus

### *Planning history and development of the campus*

The University of Alaska established Kuskokwim Community College in July 1972, and 83 students began classes in fall of that year. From its start, Kuskokwim Community College recognized that to adequately serve the people of southwestern Alaska, it must consider the entire Yukon-Kuskokwim delta its campus. Toward this end, KCC began its unique and workable Village Outreach Program, the first of its kind in Alaska. Under this program, instruction was provided to approximately 20 villages in the area.

In 1987, a major restructuring effort throughout the University of Alaska (UA) statewide system merged Alaska's nine community colleges and three universities into three universities with extended campuses at the former community college sites. Since then, KuC has merged the missions of community college service and two-year branch campus of UAF.

KuC buildings were built in phases between 1977 and 1982. The YLC building was built in 1977 and the main academic building was complete in 1982. Sackett Hall, the student dormitory, was complete in 1984 and in 1994, the Yupiit Piciryarait Cultural Center housing the library, museum and multi-purpose meeting room, was the last campus structure completed.

In recent years, two learning centers, in St. Mary's on the lower Yukon River and Aniak in the middle Kuskokwim area, were established, but activity has been sporadic and declined as the completion of grant-funded programs changed. For some students located in the region, the KuC developed in a "virtual" sense, as KuC is committed to distance learning, facilitated by support from the Center for Distance Education at UAF.

John Sackett Residence Hall,  
KU 105  
(1984)



Yup'ik Language Center,  
KU 101  
(1977)



Main Academic Facility  
KU 102, KU 103, KU 104  
(1977 - 1982)



Yup'it Piciryarait  
Cultural Center, KU 106  
(1994)



**Kuskokwim Campus, West View**

# Facility Condition Survey



**Kuskokwim Campus  
Bethel, Alaska**

# 5

**University  
of  
Alaska  
Fairbanks  
2006**





## 5. Facility Condition Survey

### *Physical conditions of the campus to be addressed by the campus master plan*

The KuC site grounds are located in a mixed commercial and residential area to the north, east, and south; and are adjacent to wetlands on the west. The property on which the educational buildings are located encompass Lot 1A in City Center Subdivision, Block 1 with approximately 3.23 acres. The dorm is located on Tract C1 in Addition to Bethel Townsite USS No. 3770 with approximately 6.25 acres of which some unbuildable low-lying wetlands exist.

The parking lots, used by KuC students and faculty, are accessed off of Akiak Drive and are located along the east side of the dorm and main academic buildings. The KuC parking lot contains spaces for approximately 80 vehicles. There is a need for additional parking during peak use periods. The parking lot for the cultural center, which houses the Public Library/Museum, is accessed off of Chief Eddie Hoffman Highway and typically not used by the KuC students or faculty. The cultural center parking lot contains spaces for approximately 100 vehicles. The parking lots are unpaved and lack proper accessible space provisions.

***There are seven buildings in the UAF inventory system for the KuC complex. Refer to Appendix 5 for the existing spaces in each building.***



**Kuskokwim Campus, Aerial View**

## ***The Main Academic Building***

The main academic building (KU102-103-104) has been constructed in three phases over the years and is a good middle-aged building. With renovations and improvements this building will retain useful life for another twenty to thirty years. Issues that have been documented related to the condition of the building and the recommended improvements include:

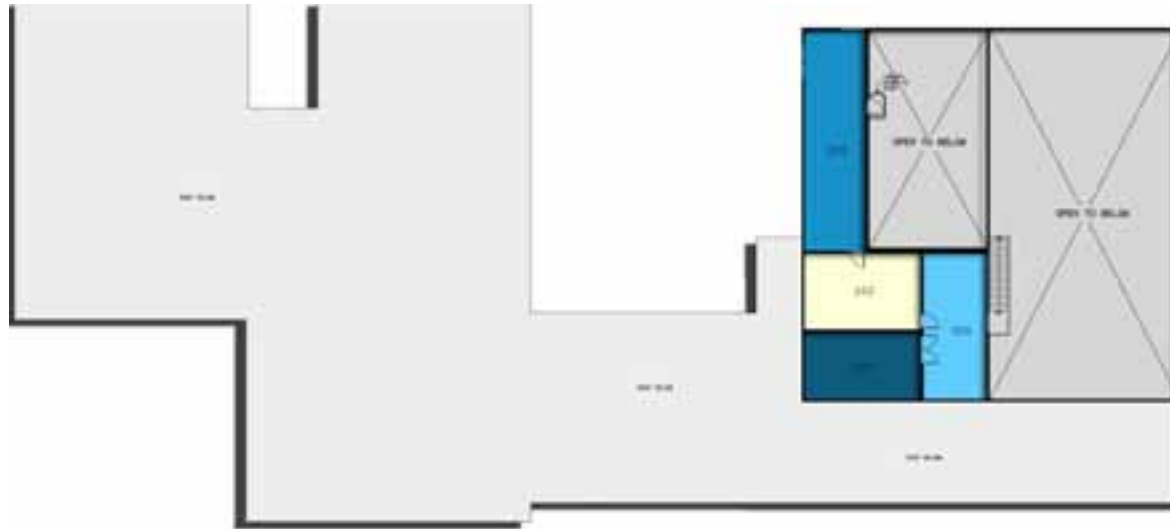
1. Renovation and ADA upgrade of toilet facilities.
2. Upgrade and replacement of fire alarm systems, exit lighting, and exit signage.
3. Replacement and ADA upgrade of entrance steps, ramps, doors, and lobbies.
4. Upgrade and replacement of data/communication infrastructure including computing centers.
5. Reconfigure areas for functional provisions and replace demountable partition systems with constructed partitions.
6. Replacement of worn finishes and obsolete hardware and equipment.
7. Upgrade of fixtures and equipment for energy efficiency.
8. Replacement and upgrade of exterior finishes.
9. Upgrade and zoning improvements of HVAC systems





**Floorplan Existing Situation - KU 102, KU 103, KU 104 - First Floor**  
Main Academic Facility





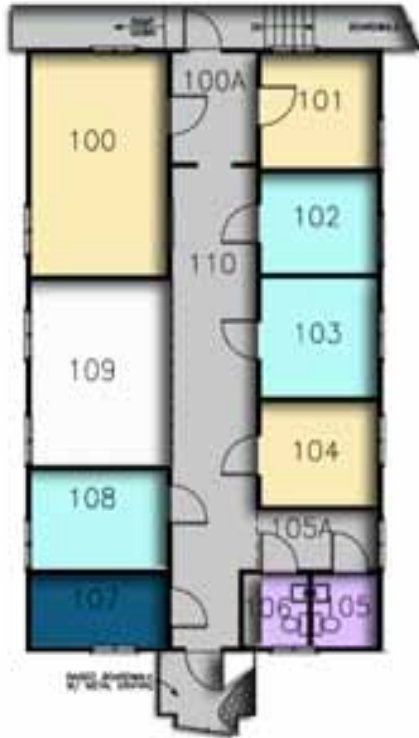
**Existing Floorplan - KU 102, KU 103, KU104 - Second Floor**  
Main Academic Facility



## *The Language Center*

The oldest building (KU101) which is referred to as the “Language Center” is functional and has served a good starter for the KuC, but it is limited in potential to connect with the main academic functions. The building is a simple “wood box” and is small enough that relocating the entire building may be the best option for this area. The expansion of the academic functions in this direction will be best served with new construction. Issues that have been documented related to the condition of the building and the recommended improvements include:

1. Replacement of worn finishes and obsolete hardware and equipment.
2. Upgrade of fixtures and equipment for energy efficiency.
3. Replacement and upgrade of exterior finishes.
4. ADA upgrades.
5. Reconfiguration for programmed functions.



### **Floorplan Existing Situation - KU 101**

Yup'ik Language Center



## *The Dorm Building*

The dorm building (KU105) is a good building that is still young and will serve the student population for approximately another thirty years with routine maintenance programs in place. Signs of wear and tear are very minor and the building appears that the students care about keeping this a nice place to live. Issues that have been documented related to the condition of the building and the recommended improvements include:

1. Upgrade the sprinkler system to meet current code requirements.
  2. Upgrade and replacement of fire alarm systems, exit lighting, and exit signage.
  3. Renovate and expand the existing kitchen and dining area.
  4. Replace the recreation deck, which has heaved due to the swampy soil conditions.
  5. Replacement of lighting, operable windows, sewage pumps, and worn finishes. These replacements will improve the energy efficiency, reliability of systems, and appearance of the facility.
  6. Renovate or remove kitchenette facilities in the rooms.
  7. Reinstall the walk-in freezer/refrigerator unit to be on grade level with the kitchen.
- Note: this is referred to as a separate building (KU107) in the UAF inventory.



# Floorplan Existing Situation - KU 105

John Sackett Residence Hall

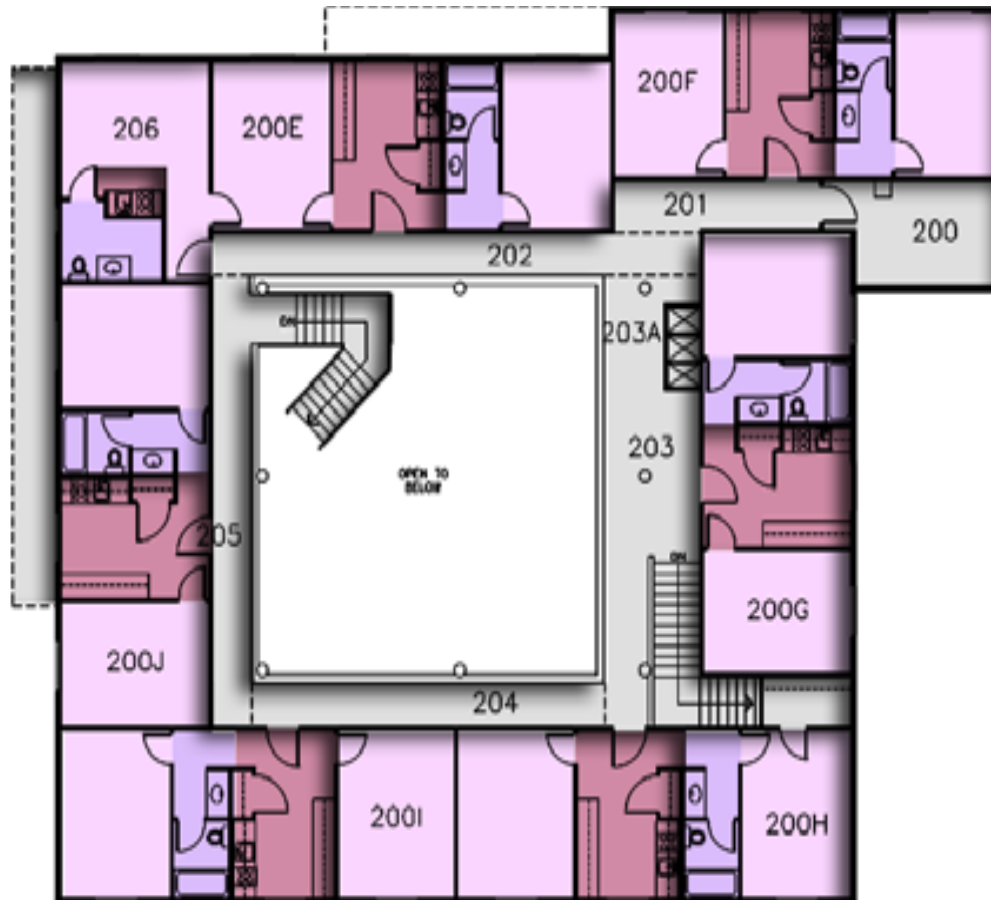
First Floor



## Floorplan Existing Situation - KU 105

John Sackett Residence Hall

Second Floor



## *Yupiit Piciryarait Cultural Center*

The cultural center building (KU106) is a very new and prominent building in Bethel. The materials and design will likely stand the test of time and it is anticipated that this will be a fine building for the next fifty years with routine maintenance programs in place. Issues that have been documented related to the condition of the building and the recommended improvements include:

1. Improve display and storage systems for library and museum.
2. Maintain systems; repair leaks when they are discovered and inspect for leaks on a regular basis, repair or replace finish materials when they become damaged or broken, and service systems as necessary to keep efficient operation.

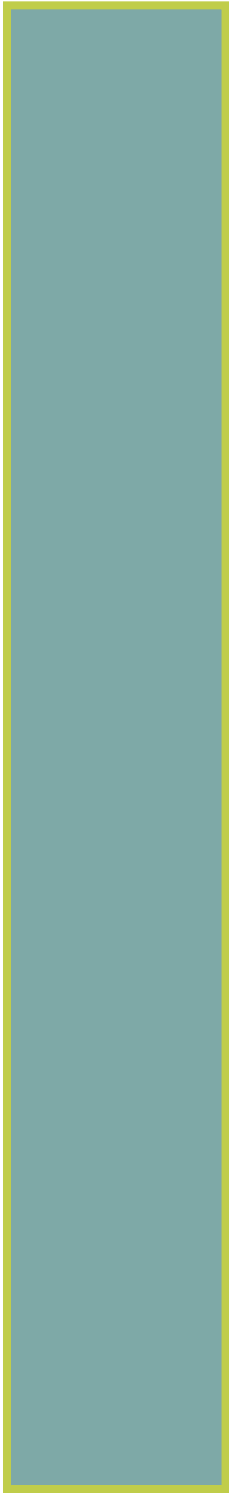


# Floorplan Existing Situation - KU 106

Yupiit Piciryarait Cultural Center

First Floor







# Trends and Issues in Space Planning

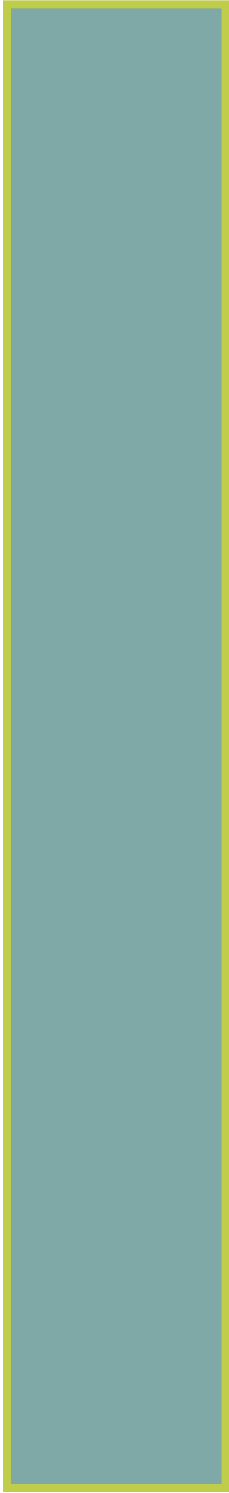


**Kuskokwim Campus  
Bethel, Alaska**

# 6

**University  
of  
Alaska  
Fairbanks  
2006**





## 6. Trends and Issues in Space Planning

KuC does not have enough space for current faculty and staff, and certainly not enough space for new programs. This year KuC converted over 500 square feet of storage space into office space. Office space for two staff and two faculty members were created by this reassignment of storage space. Still, there is not enough office space for faculty and staff. Two faculty members share an office—an untenable situation made slightly bearable by the fact that each has classes and travel schedules at different times, which minimizes the presence of both at the same time.

Classroom space is another critical need. Currently, all classrooms and most staff and faculty offices, if available, are used by students for evening audio-conference classes. Increasing classroom space, particularly with study carrels, is an immediate need. Specialty classroom space for art and cottage industries classes and workshops will support and enhance KuC's ability to meet the public demand for these types of classes. Currently, a popular art class had to find another home this year; KuC rents a privately owned garage for ceramics because the high school, where the class is usually held, is under major renovation.

### KUSKOKWIM CAMPUS (KuC) UAF - SUMMARY SPACE ANALYSIS

Building Number	Building Name	Existing Area	Current Required Area (Spring 2006)	20 Year Future Required Area
KU-Campus	<b>TOTAL AREAS</b>	<b>52084</b>	<b>63270</b>	<b>78916</b>
KU000-Exp	<b>FUTURE ACADEMIC EXPANSION ADDITION TOTAL</b>	<b>0</b>	<b>7410</b>	<b>11030</b>
KU101	<b>YUP'IK LANGUAGE CENTER TOTAL</b>	<b>1482</b>	<b>1580</b>	<b>1580</b>
KU102	<b>MAIN ACADEMIC BUILDING "PHASE 1" TOTAL</b>	<b>3400</b>	<b>3578</b>	<b>3578</b>
KU103	<b>MAIN ACADEMIC BUILDING "PHASE 2" TOTAL</b>	<b>6271</b>	<b>6944</b>	<b>6944</b>
KU104	<b>MAIN ACADEMIC BUILDING "PHASE 3" TOTAL</b>	<b>12650</b>	<b>13006</b>	<b>13006</b>
KU105	<b>SACKETT HALL (DORM) TOTAL</b>	<b>10575</b>	<b>10575</b>	<b>10575</b>
KU105-Exp	<b>FUTURE MARRIED STUDENT HOUSING EXPANSION TOTAL</b>	<b>0</b>	<b>0</b>	<b>10575</b>
KU106	<b>YUPIIT PICIRYARAIT CULTURAL CENTER TOTAL</b>	<b>17572</b>	<b>20042</b>	<b>21493</b>
KU107	<b>REFRIGERATOR / FREEZER TOTAL</b>	<b>134</b>	<b>134</b>	<b>134</b>



This space crunch was created by the increase in grant-funded programs. Although the same grants may not be funded or the same amount of grant funded may not be sustained in the future, the current situation underscores the fact that KuC has no space to grow, and it does want to grow. Its partners say KuC has to grow to meet the educational and training needs of the region.

Refer to Appendix 5 for the required and future expansion spaces in each building. Areas identified in Appendix 5 are associated with actual rooms located in the existing buildings and with un-built space that is required for the proper accommodation of the academic programs. The existing buildings are identified using the UAF inventory numbering and two groups of un-built spaces are identified with the post-script “exp”.



Survey results show that both the majority of community and KuC faculty, staff, and student respondents view the current buildings as inadequate for what KuC is attempting to offer, much less what they would like to see offered at KuC.

The library and museum in the YPCC received the most positive comments; however, both buildings were thought to have inadequate space overall and were inefficiently used for current needs. In particular, the library was viewed as “too small”. The layout of the YPCC made it difficult to effectively and securely offer adequate library service to the public, primarily because the public restrooms were outside of the library and required the entire building be open to the public during extended library hours. That exposed the entire building to vandalism and mostly youthful mischief that was difficult to monitor because of the layout of the library.



Although Sackett Hall has not been truly overflowing since the 2000-01 academic year, recent trends have shown increasing enrollment by students who require resident housing to attend KuC. The new director at KuC has made advising and recruiting efforts a high priority by devoting Fund 1 money to those positions, and this has already provided positive results: there was an increase in students at the dorm between the fall 2005 and spring 2006 semester—usually there is a drop in students between those semesters.

KuC has had requests for married student or family housing for students with families from villages. Usually, students with families either find their own housing in Bethel, arrange to have childcare with extended family in their home village, or delay college until their children are older. Ideally having a small number of family housing units for such students while they attend KuC would respond to this need.

In fall 2004, KuC received an NSF-TCUP grant to enhance and support student academic and professional interests in science, technology, engineering, and mathematics (STEM) fields. The objectives were to provide greater access to quality STEM education in the Y-K Delta by hiring faculty in those fields and to improve academic and professional success of STEM students by forming an Alaska Native Science and Engineering Program (ANSEP) chapter at KuC. In order to offer a local option and focus of interest for science students, KuC is developing a certificate degree in ethnobotany to offer an emphasis area in the college's AAS degree.

On a positive note, in fall 2005 KuC received a one-time Title III renovation grant to expand science laboratory facilities to be completed by August 2006. This lab expansion will allow increased science course and lab offerings in the fall semester. This expansion will further the campus goal to maintain and enhance educational excellence in STEM fields by continuing excellent programs and services to students and the community.

Another positive trend is that as more effective partnerships are forged with community and regional entities, their space becomes accessible for use by KuC and its programs. The Yuut Elitnaurviat (People's Learning Center) boasts nine regional partners. KuC is a key partner in this center, which is a new regional vocational and technical school serving high school and adult learners. At full implementation, this project will serve 250 learners in a residential setting via a \$30 million facility. Several major career pathways are currently targeted include early childhood education, information technology, construction trades, allied and behavioral health, business, transportation, and process technology.

### ***Academic Program Trends and Anticipated Facilities Needs***

The population of the Y-K Delta region has increased by 108 percent since 1970 and by nearly 6 percent since 2000 (Appendix 3). It is one of few regions in rural Alaska to have sustained increase in population. This growth is primarily natural rather than a consequence of immigration, and it introduces youth into the population dynamic. A youthful population means increasing needs for education and services into the foreseeable future.

The conceptual plans for additional space are supported by the rise in enrollments (unduplicated head count depicted in Table 1; increase in the number of students living in Sackett Hall) and increase in credit hour production. As these upward trends continue, as it is indicated they will, KuC's chronic space needs will become acute. Enrollment management plans can prioritize



residential space, which will provide some relief for classroom and laboratory space planning, but at some point KuC may be viewed as inadequate and obsolete.

The following existing and proposed programs highlight ways in which KuC has addressed service gaps or strengthened unique features of the region's rich language and culture. In order to develop programs such as these, good space that enhances and stimulates personal achievement is a premium.

## **Programs**

### ***Emerging Scholars Program:***

KuC has developed and implemented the Emerging Scholars Program (ESP), a 24-to-30 month program for college students, primarily freshmen, in the 18-to-24-year-old age group. It is a multi-level 60-to-75-credit course sequence, emphasizing competency-based learning in a residential campus setting. Student-centered and integrated instruction links learning to the development of individual, social, and academic skills needed to complete certificate or degree programs to be successful in the community, workplace, and life. The goal of the program is retention and successful completion of an associate degree, and ideally, matriculation into a four-year degree.

The Kuskokwim campus Emerging Scholars Program (ESP) has set a standard for the state in terms of retention rates for Alaska Native students. This innovative grant funded program has turned an 80% attrition rate into an 80% retention rate, far above the rest of the UA system for full time students. More than half (55%) of the Fall '04 ESP students returned for the Fall '05 semester, graduated, or transferred to another campus. Currently the ESP has 35 full-time students: 11 new students in Spring '06 and 24 returning students. Additionally, three students from Fall '05 have continued as part-time students and 10 former ESP students are seeking bachelor's degrees at KuC or elsewhere in the UA system.

### ***Yup'ik Language and Studies Bachelors Degree Program:***

The campus continues to help maintain and preserve the language and culture of the Yup'ik and Cup'ik Eskimo in the Yukon-Kuskokwim Delta. In fall 2005, the Alaska Native Language Center at UAF and KuC and Bristol Bay campuses received a three-year U.S. Department of Education Alaska Native Education grant to create a locally defined, staffed, and delivered Yup'ik language and education program for Southwestern Alaska. The final product of the grant will be a bachelor's degree in Yup'ik language and studies available at KuC. This grant supports a Yup'ik Language Institute at KuC.

### ***Support for STEM fields:***

In fall 2004, KuC received an NSF-TCUP grant to enhance and support student academic and professional interests in science, technology, engineering and mathematics (STEM) fields. The objectives were to provide greater access to quality STEM education in the Y-K delta by hiring faculty in those fields and to improve academic and professional success of STEM students by forming an Alaska Native Science and Engineering Program (ANSEP) chapter at KuC. In order to offer a local option and focus of interest for science students, KuC is developing a certificate degree in ethnobotany to offer an emphasis area in the college's AAS degree.

### ***Nursing Degrees:***

KuC graduated an LPN cohort in 2003 and an RN cohort in 2005. The next cohort of RN students is slated to start in January 2007.

### ***New Programs:***

New or extensions of existing academic programs will require at least three new faculty positions in the next two to five years. As noted in the summary of KuC offerings (Appendix 1), an ethnobotany certificate to feed into the new CRCD associate of science degree and a Bachelor of Arts degree in Yup'ik language and studies are "on the horizon." These new offerings will require at least two new faculty positions within the next five years. One of those faculty positions is currently being recruited and there is technically no space for this position.



Other new programs, such as process technology through the Yuut Elitnaurviat consortium, and “tech prep” through the school districts, may propose to use existing or new space developed with KuC partners for the classroom aspects of the programs. Even so, these new programs will require either more adjuncts or faculty.

The 35 to 12 year-old buildings at KuC range from inadequate to moderately adequate, but all are perceived to need renewal, renovation, and additional square footage to meet the current needs of the region. The initial conceptual plans discussed by the KuC master planning committee recommend: stepping up deferred maintenance to preserve the usefulness of current buildings; major renewal and reconfiguration of space; creating additional space, such as adding a second-floor to the ABE Center; creating new space by extending the north east section of the main building; and finally, making plans to replace the main campus building. Other space needs are for specialized classes (art, study carrels) and housing for married students and students with families. The latter is envisioned to be up to 20 years in the future.

## **Staff**

### ***Maintenance Staff:***

As KuC expands, there will be a critical need to ensure that operations staff, namely maintenance staff, is adequate to cover the requirements of the expanded physical plant. Currently, maintenance staff consists of a staff position for its entire physical plant. That position routinely generates considerable overtime, particularly during extreme weather conditions (e.g. frozen pipes in persistent cold weather). Staff and faculty have identified additional assistance for the current campus maintenance staff as a high priority; a major concern is “burn out” of that dedicated person.

### ***Technology Staff:***

With more staff, faculty and students comes an increase in technology services. KuC currently has two technology staff positions while the number of technological units has increased to nearly 300 and more distance classes have E-Live versions. The “tech request” queue continues to grow and remains long, and in some cases technology units receive only quick triage treatment and over time fall to such disrepair that they become unusable. Faculty constantly express frustration about KuC’s inability to meet educational technology requests, and staff are hampered from doing more in the information technology aspects of their jobs.





# Campus Master Plan Development

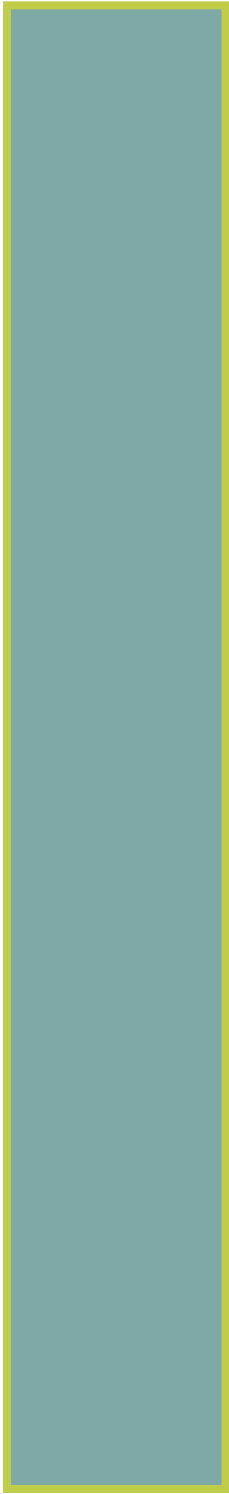


**Kuskokwim Campus  
Bethel, Alaska**

# 7

**University  
of  
Alaska  
Fairbanks  
2006**





## 7. Campus Master Plan Development

### *Analysis of existing conditions and opportunities for campus change*

The existing buildings at KuC are in average condition and are maintained with onsite staff. As noted in Section 5, one of the buildings is old, small, non-compliant with the current building codes, non-compliant with ADA, and outdated; removal or relocation is considered the best option for the long-term improvement of the KuC. The other buildings are varied in age and thus their condition varies. Maintenance of the KuC existing facilities is conducted and regular programs are in place for routine reviews of condition. With updating of building systems, some reconfiguration of spaces, and continued replacement of worn or damaged finishes the main buildings at KuC will have another 30 to 50 years of good life.

There is a space crunch at KuC. As noted in section six, the existing areas are currently filled with function and expansion is necessary to meet current requirements of the existing academic programs. Areas are insufficient for seminar/distance learning students, office space and standard classroom space. The Library is very crowded and limited in reading / study space; the space that was originally designed for reading room space has been converted to stack area. Married student housing is not provided and is necessary for improvement of potential student enrollment and new faculty. Refer to appendix 5 for space required for the current academic programs and for the future needs of the campus.

The existing site will accommodate expansion of the main academic building, the library, and housing. Parking as it exists adjacent to the main academic building and the cultural center will be necessary to accommodate the full projected enrollments.



Development of the campus at the current site will continue in terms of electronic communications infrastructure to facilitate distance learning and communication with the University of Alaska Fairbanks. Infrastructure to support distance learning will continue to expand as new technologies become available, and as providers develop higher bandwidth services. Recently renovated and improved lab facilities will increase the ability of instruction in the science programs.

Structural drawings are available for the south end of the main academic building (KU104). A review of scan copies of sheets S1-S5 was performed for the purpose of determining the feasibility for adding a second floor inside of the existing structure. The addition of the second floor is a possibility for expansion with the following understandings:

1. The existing piling/column layout is similar in the south end of the wing to the area, which currently has two floor construction. The existing piling / column layout in the area of the added second floor will be used to carry the new load. Additional interior columns in the first floor plan will be required to carry the new second floor load to existing piling. Additional investigation will be performed on the building to verify that the piling will be able to withstand the additional load and additional internal floor load; it appears that the addition of the second floor is feasible from the standpoint of the existing piling layout.

2. Settling will need to be accommodated in the detailing, because it will occur as the load on the existing piling is increased with the additional floor load. Risk of cosmetic damage: UAF will assume the risk of settling with added load on existing support structure. It will also be very important to make the detailing with allowance for potential movements caused by the additional load on the existing structure... control joints, trim in corners, tolerances in window and door installation, etc.

3. Seismic upgrade of the building will be necessary to comply with current building code requirements. Review of the existing building structure will be performed to verify provisions to resist seismic forces. Upgrade of the entire existing structure for seismic forces is likely to be necessary to meet the current building code. These upgrades will be integral with the interior renovations that will be necessary for other construction related to the construction of the additional second floor area.



# A New Campus Plan



**Kuskokwim Campus  
Bethel, Alaska**

**8**

**University  
of  
Alaska  
Fairbanks  
2006**





Academic Adventure  
with University Hawaii-Hilo

## 8. A New Campus Plan

### *Actions to achieve campus master plan goals*

The future of the KuC is bright, and enrollment has been growing. Ultimately, the campus will require building additions for academic space and additional student housing to support significant growth in enrollment. With the realities of funding procurement, planning must consider growth in both the near and far terms.

Short-term growth will best be facilitated by the addition of second floor space inside of part of the existing academic building and continuing the partnerships now enjoyed by the Kuskokwim Campus. Distance learning capabilities in terms of infrastructure and programs are ongoing and essential to continued growth of the programs provided to the Yukon Kuskokwim region.

Over the long term, options will include expansion of the existing footprint of the academic building and the cultural center. The addition of a new residential building is also anticipated in the long term. Costs for these long-term options will be significant, and planning efforts will be timed with the campus plan for growth and with the required funding.

Regardless of the physical campus plan, the “virtual” campus will continue to grow and expand in terms of the infrastructure, speed of connection, and development of distance education methods. Planning efforts for digital infrastructure should continue in parallel with planning for the physical campus.





**Proposed Floorplan - KU 102, KU 103, KU104 - First Floor**  
Main Academic Facility

The main academic building will be expanded in phases to increase the area from 22, 321 square feet to 39,121 square feet in three phases. Expansion of the building will accommodate the major space requirements for offices, classrooms, and distance learning seminar rooms. Refer to section 9 for the phasing and Appendix 5 for the space requirement detail for the main academic building.





**Proposed Floorplan - KU 102, KU 103, KU104 - Second Floor**  
Main Academic Facility

# Proposed Floorplan - KU 106

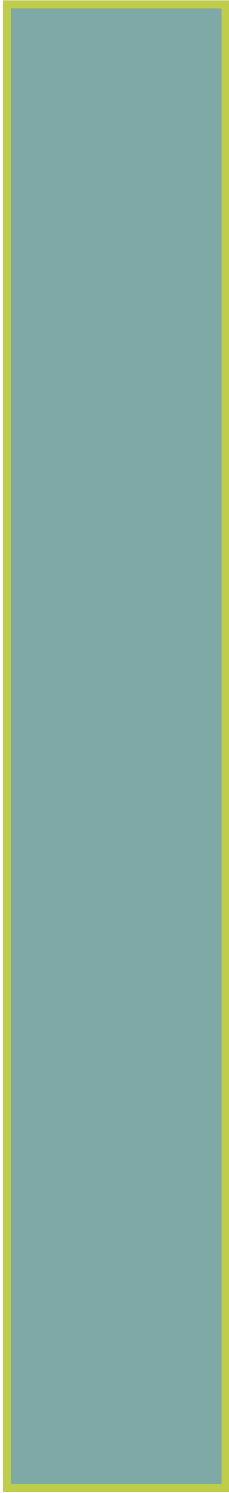


## Proposed Expansion - KU 106

### Yupit Piciryarait Cultural Center

The Yupit Piciryarait Cultural Center will be expanded to relieve the over crowded library. Area of the library will be expanded from 3,532 square feet to 6,332 square feet; the total building area will be expanded from 17,572 square feet to 20,372 square feet. Expansion of the library area will accommodate the major requirements for reading and study areas, as well as storage. Separate public entry and toilet rooms will be provided for expanded hour access to the library when the rest of the building is closed.





# Implementation and Phasing

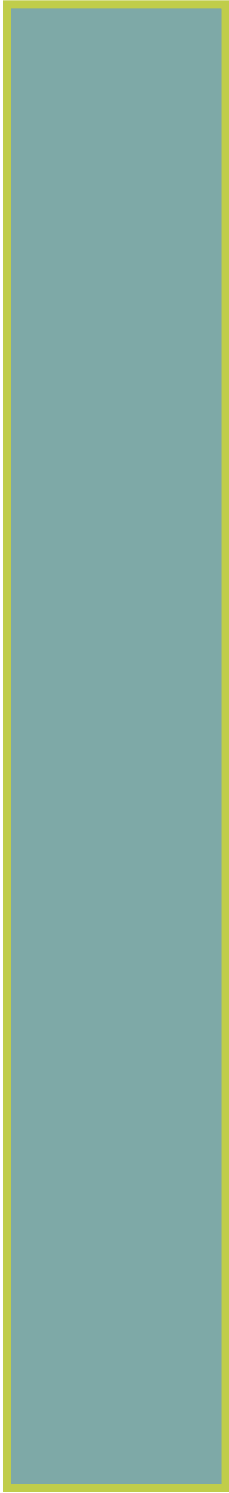


**Kuskokwim Campus  
Bethel, Alaska**

# 9

**University  
of  
Alaska  
Fairbanks  
2006**





## 9. Implementation and Phasing

Steps and schedule for implementing actions of the Kuskokwim Campus master plan include short and long term facilities and infrastructure development to support the educational program.

### **Short Term (1 to 5 years)**

- Pave parking lots on main campus and cultural center
- Expand second floor inside of existing building.
- Relocation of KU101; ("Yup'ik Language Center")
- Addition to Academic Building to the North of KU102
- Addition to Cultural Center Library
- Identify vocational technical partnerships in Bethel

### **Long Term (5 to 20 years)**

Development of a long-term master plan for future expansion:

- Addition to Academic Building to the South of KU104
- New Residential Building adjacent to the existing dorm building KU105

### **Overall**

- Expand academic and faculty areas:
- Add student residential area
- Improve distance learning connection to University of Alaska Fairbanks
- Develop distance learning expansion to outlying communities

### **Phasing**

- Phase I: Expand second floor inside KU 104; add vertical circulation
- Phase II-A: Relocate KU 101 off site; building addition (academic)
- Phase II-B: Pave Parking
- Phase III-A: Building addition (library)
- Phase IV: Building addition (academic)
- Phase V: New residence building







# Appendix

# A 1



**Kuskokwim Campus  
Bethel, Alaska**

**University  
of  
Alaska  
Fairbanks  
2006**





## KUSKOKWIM CAMPUS (KuC) UAF WHO KUC SERVES/ WHAT KUC OFFERS

***KuC STUDENTS and PROGRAM DELIVERY METHODS: (On campus and at remote sites)***

New high school graduates  
Dual credit high school students  
Employer supported  
Nontraditional adult students  
Special interest adults and children  
Part-time and full-time

On Campus Classes  
Talent Search  
Emerging Scholars Program  
Alaska Native Science and Engineering  
Program/Boot Camp  
Seminar Format  
Rural Human Services  
Community Health Aides

Distance Delivered  
Audio Conference  
Video conference  
Computer Online

Continuing Education Classes  
Continuing Education Units

General Education Development  
(GED) and Adult Basic Education

***KuC PROGRAMS: (On campus and distance delivered to remote sites)***

UAF Certificates (30 credits)

Early Childhood Education  
Office Management and Technology  
Rural Human Services  
Community Health  
Information Technology Specialist  
Accounting Technician  
Applied Business Management  
Yup'ik Language Proficiency

University Bachelor's Partnerships

Business Administration  
Rural Development  
Education (elementary and secondary)  
Social Work  
Interdisciplinary  
Childhood Development and Family Studies

Occupational Licenses/Certificates

Boiler Operator  
Certified Public Manager  
Wastewater Operator  
Water Treatment  
Fire Extinguisher Inspector  
Hazardous Material Handling  
IT: A+, Net +, IC3, CCNA  
Certified Nurse Assistant  
Personal Care Attendant  
Medical Billing and Coding  
First Aid/CPR  
Emergency Wilderness Training  
Asbestos Removal  
Workplace Basics  
Registered Nurse

AA Degree –Core requirements (60 credits) Plus

Tribal management  
GE Science

MA

Rural Development  
Community Psychology

AAS Degree—Core requirements (60 credits)

Plus

Community Health  
Human Services  
Office Management and Technology  
Applied Business  
Interdisciplinary  
Information Technology Specialist  
Early Childhood Education  
Applied Accounting  
Apprenticeship Technology  
Renewable Resources  
Yup'ik Language Proficiency

Community Education Classes

Intro workshops:  
Yup'ik Language and Culture  
Interethnic Communication  
Personal Growth  
Human Services topics  
Special interest classes and workshops  
Information Technology: key applications  
Cooperative Extension Service  
Marine Advisory Program  
Public Forums

**APPENDIX - 1 (cont.)**

**OTHER PARTNERSHIPS:**

**EDUCATION BROKERS:**

**ON THE HORIZON:**

<p>Alaska Army National Guard                  Yukon-Kuskokwim Health Cooperation                  Lower Kuskokwim School District                  Lower Yukon School District                  Kuspuk School District                  Yupiit School District Village Library Enhancement                  Statewide Community Health Aide Training Program                  Yuut Elitnaurvat                  City of Bethel                  United Utilities                  U.S. Fish and Wildlife Service                  Alaska Department of Fish and Game                  Association of Village Council Presidents                  Office of Environmental Health                  Calista Corporation                  Orutsarmuit Native Council                  Pacific Alliance/ANSEP                  Bethel Native Corporation                  Girl Scouts                  Coastal Villages Region Fund                  Kuskokwim Native Association                  Yukon Delta Fisheries Association                  Forty-six Regional Villages</p>	<p>Testing Services: GRE, CLEP, PRAXIS, VUE, ASVAB, ASSET, GED                  Teacher Recency Training                  Environmental Tech at the University of Alaska Sitka                  Child Development Associate</p>	<p>YPCC Expansion                  EMAS (recruiting tool)                  Process Technology through Yuut Elitnaurvat                  Yup'ik Language and Studies B.A.                  Community Supported Learning Centers                  Ethnobotany Certificate</p>
---	---	---

**CAMPUS FACILITIES:**

Library  
 Cultural Center

IT Laboratory  
 38 student dorm

Digital laboratory  
 On campus classrooms

Community Building

# Appendix

# A2



**Kuskokwim Campus  
Bethel, Alaska**

**University  
of  
Alaska  
Fairbanks  
2006**





## APPENDIX - 2A

### FACULTY/STAFF/STUDENT SURVEY FOR KuC ACADEMIC AND MASTERPLANS Conducted March 2006

Your response to this survey will be held confidential by Mary Pete, KuC Director, and Susan Baird, KuC Development Coordinator, unless you choose to give your name. To respond on this form, click File on the toolbar, "Save as" and save this survey form to your desktop. Open with Word, fill out and save. To respond anonymously, click the link near the bottom of the e-mail message from the Director telling you about the survey, attach your saved Desktop survey document and send. Thank you very much for your participation!

1. I am: \_\_\_\_\_ Faculty \_\_\_\_\_ Staff Member \_\_\_\_\_ Student at KuC

Name (optional): \_\_\_\_\_

2. For **faculty and staff**—number of years connected with KuC:

\_\_\_\_\_ 0-3 \_\_\_\_\_ 3-5 \_\_\_\_\_ 6-9 \_\_\_\_\_ over 9

3. For **students**—number of semesters at KuC:

\_\_\_\_\_

4. What do you think **works particularly well** at KuC (Please choose from these suggestions and/or identify other aspects):

academic programs \_\_\_\_\_ student services \_\_\_\_\_ GED \_\_\_\_\_  
advising center \_\_\_\_\_ business office \_\_\_\_\_ Sackett Hall \_\_\_\_\_  
director's office \_\_\_\_\_ bookstore \_\_\_\_\_ library \_\_\_\_\_  
distance delivery \_\_\_\_\_ instructional support services \_\_\_\_\_  
technical support \_\_\_\_\_ ABE Center \_\_\_\_\_ financial aid \_\_\_\_\_  
continuing education/professional development \_\_\_\_\_  
programs such as ANSEP \_\_\_\_\_ ESP \_\_\_\_\_ student activities other than academic \_\_\_\_\_  
Other program? Identify \_\_\_\_\_

5. Please **briefly explain** your answers to the previous question:

6. What needs to be **improved / changed / added** in KuC's effort to serve the area? (**Please be specific**)

7. What is **good / needs to be changed / improved** as far as any **buildings** connected with KuC?

8. What are your **recommendations for achieving those improvements / changes / additions** to either **programs or the physical plant** (all buildings) of KuC?

9. **Final comments**, if needed.

Surveyor's Initials \_\_\_\_\_ Date \_\_\_\_\_  
**COMMUNITY SURVEY FOR KuC MASTER AND ACADEMIC PLANS**  
 Conducted March 2006

Respondent \_\_\_\_\_ Place of residence \_\_\_\_\_

**1. Have you taken any courses or offerings from KuC?** No \_\_\_\_\_ Yes \_\_\_\_\_

If "no," skip #2 and go to # 3. If "yes," go to # 2.

**2. What is your experience with KuC?**

Taken or taking a class \_\_\_\_\_ Family member taken or taking a class \_\_\_\_\_

Taken or taking a Continuing Education class \_\_\_\_\_

Taken or taking a distance delivered class \_\_\_\_\_ Taught any class or workshop \_\_\_\_\_

Community partner \_\_\_\_\_ In a degree program \_\_\_\_\_ Other \_\_\_\_\_

**3. Are you familiar with the services at KuC?** No \_\_\_\_\_ Yes \_\_\_\_\_

Even if the answer is no, continue with the survey because there is a "don't know" option to each question.

**4. What is your opinion of the quality of programs/courses offered at KuC?**

I will list several ways that KuC/UAF delivers services and courses. Please tell me how you would rate KuC services in each area. The ratings for each are: Very good, Good, Average, Poor, and Don't Know.

Student Services (Registrar):

Very good \_\_\_\_\_ Good \_\_\_\_\_ Average \_\_\_\_\_ Poor \_\_\_\_\_ Don't know \_\_\_\_\_

Regular on campus academic classes:

Very good \_\_\_\_\_ Good \_\_\_\_\_ Average \_\_\_\_\_ Poor \_\_\_\_\_ Don't know \_\_\_\_\_

Distance delivered classes:

Very good \_\_\_\_\_ Good \_\_\_\_\_ Average \_\_\_\_\_ Poor \_\_\_\_\_ Don't know \_\_\_\_\_

Continuing education classes:

Very good \_\_\_\_\_ Good \_\_\_\_\_ Average \_\_\_\_\_ Poor \_\_\_\_\_ Don't know \_\_\_\_\_

Programs or events at the cultural center:

Very good \_\_\_\_\_ Good \_\_\_\_\_ Average \_\_\_\_\_ Poor \_\_\_\_\_ Don't know \_\_\_\_\_

Library:

Very good \_\_\_\_\_ Good \_\_\_\_\_ Average \_\_\_\_\_ Poor \_\_\_\_\_ Don't know \_\_\_\_\_

Adult Basic Education Department:

Very good \_\_\_\_\_ Good \_\_\_\_\_ Average \_\_\_\_\_ Poor \_\_\_\_\_ Don't know \_\_\_\_\_

Cooperative Extension Service:

Very good \_\_\_\_\_ Good \_\_\_\_\_ Average \_\_\_\_\_ Poor \_\_\_\_\_ Don't know \_\_\_\_\_

Marine Advisory Program:

Very good \_\_\_\_\_ Good \_\_\_\_\_ Average \_\_\_\_\_ Poor \_\_\_\_\_ Don't know \_\_\_\_\_

**5. You just heard and commented on a list of services and programs that UAF/KuC offers. How likely is it that you would use any of these services in the future?**

Very likely \_\_\_\_\_ Somewhat likely \_\_\_\_\_ Not likely \_\_\_\_\_



APPENDIX - 2B (cont.)

The next three questions pertain only to the Cultural Center:

**6. How often do you go to the (Yupiit Piciryarait) Cultural Center/Library/Museum?  
Your choices are:**

Daily \_\_\_\_\_ Once a week \_\_\_\_\_ Once a month \_\_\_\_\_ Once a year \_\_\_\_\_ Never \_\_\_\_\_

If never, skip to #10

**7. What is the most common or frequent reason you go to the YPCC?**

-----

**8. Rate your satisfaction with the whole cultural center *building*? Your choices are:**

Excellent \_\_\_\_\_ Good \_\_\_\_\_ Average \_\_\_\_\_ Fair \_\_\_\_\_ Poor \_\_\_\_\_ Don't know \_\_\_\_\_

**9. What improvements would you like to see for the cultural center? If they need clarification or help, suggest the following: larger facility, more classrooms, full service kitchen, larger museum, more space overall, paved parking lot, etc.**

-----

-----

The rest of the questions are about KuC in general:

**10. What is the best method to advertise information about KuC programs and events? You may choose more than one and your choices are:**

Newspapers \_\_\_\_\_ Direct mail \_\_\_\_\_ Radio \_\_\_\_\_ KuC Web site \_\_\_\_\_

Community electronic bulletin board \_\_\_\_\_ Posters \_\_\_\_\_ Television \_\_\_\_\_

Someone told you \_\_\_\_\_

**11. What do you think of all buildings at KuC?** The ratings for each building are: Very good, Good enough, Needs improvement, and Needs replacement, and Don't know..

Main campus:

Very good \_\_\_\_\_ Good enough \_\_\_\_\_ Needs improvement \_\_\_\_\_ Needs replacement \_\_\_\_\_ Don't know \_\_\_\_\_

Dorm (Sackett Hall):

Very good \_\_\_\_\_ Good enough \_\_\_\_\_ Needs improvement \_\_\_\_\_ Needs replacement \_\_\_\_\_ Don't Know \_\_\_\_\_

Cooperative Extension building:

Very good \_\_\_\_\_ Good enough \_\_\_\_\_ Needs improvement \_\_\_\_\_ Needs replacement \_\_\_\_\_ Don't know \_\_\_\_\_

**APPENDIX - 2B (cont.)**

*The next question has three parts.* (As much as possible, note responses in bullet form)

**12. What changes would you like to see at KuC in the future in two main areas?**

**The first is:**

A. Program/course/class \_\_\_\_\_

**The second area is:**

B. Improvement or remodeling to any buildings \_\_\_\_\_

C. Any **other ideas or options** KuC should consider in addition to programs, courses or buildings? \_\_\_\_\_

**13. How can KUC provide more service in your community?**

**14. What is your view of the Kuskokwim Campus?**

*For people who know very little about KuC, ask them if we can send them a document that explains who KuC serves and what KuC offers.*

**15. Requested a copy of KuC offerings document. No \_\_\_\_\_ Yes \_\_\_\_\_**

Thank you very much for your participation in this survey!  
KuC values your opinion and advice.

If you have any further questions or comments, please call the campus at 543-4500.



## ***2006 Master and Academic Plan Survey Results***

Respondents to both the internal KuC and community surveys presented some excellent suggestions for the expansion of existing certificate and degree programs. The Applied Business and Applied Accounting certificates and associate degrees are logical candidates for expansion into bachelors programs. The extensions of current programs will require more adjunct faculty at the outset and at least one additional faculty position as the programs attract more interest and student majors.

Survey results show that the majority of community and KuC faculty, staff, and student respondents view the current buildings as inadequate for what KuC is attempting to offer, much less what they would like to see offered at KuC. A total of 29 internal (faculty, staff, student) surveys were filed and 84 community surveys were administered by telephone or fax. Initially, all community surveys were analyzed as a group because there were not enough differences among partner, Bethel household and village household surveys to warrant differentiation in reporting. Some partner and Bethel respondents reported more detailed suggestions, but these were generally in degree of detail rather than kind. It appears that many people in the region who offered ideas for how KuC can provide more effective and relevant service have similar thoughts.

KuC plans to administer some form of evaluation instrument and needs assessment to its region of service at regular intervals. The results of these surveys will constitute a baseline of comparison for future assessments.

### ***Summary of Faculty, Staff, and Student Surveys***

Of the 29 who completed the survey, 10 were students, 10 were staff, and 9 were faculty. Most respondents explained their choices of programs, departments, and services they thought worked “particularly well” at KuC and had constructive suggestions for improvements. Every department listed on the survey had at least one respondent who thought it for worked “particularly well.” Overall, the “ABE Center” and “GED” got the most marks (18 and 21 respectively) for working particularly well, with academic programs close behind (17 marks). Interestingly, mostly staff and students, rather than faculty, thought highly of academic programs. Students also had good marks for student services and financial aid (9 for each), advising center (8), and the library (7). The department with the most potential, if given the appropriate level of support and resources is technical support. The KuC logo got a high mark by one respondent.

## ***APPENDIX - 2C (cont.)***

Some of the suggestions for improvement were already happening at KuC, which means campus leadership needs a more effective outreach and education process in order to inform everyone about these practices. These include relatively simple things like cleaning up around the campus grounds—something done each year before graduation—and providing students rides to and from the airport at the beginning and end of each semester. Other suggestions will be easy to do (i.e. cost no extra money), such as reviving the Friday “KuC Happenings” that electronically lists activities on campus that are slated to happen in the following week. More complex suggestions regarding space and academic programs are addressed in the comprehensive discussion about survey suggestions and Master Planning Committee meetings below.

According to most faculty, staff, and students, all buildings at KuC left something to be desired. We have an aging/aged physical plant. Respondents had solid suggestions for making the best of what we have. Most acknowledged that Sackett Hall is a special resource, because KuC is the only rural campus with a residential learning facility. Comments to make the most of Sackett Hall as a learning and enrichment opportunity abound among all groups. All comments about the Annex questioned its current value to KuC and thought that although it is a nicety, it is not a necessity.

### ***Community and Partners Survey Results***

A total of 84 community surveys were completed telephonically or through fax with over 30 communities in the region and 14 partner agencies and businesses. Most surveys were from Bethel households. KuC leadership will continue to analyze and evaluate information from surveys.

Most survey respondents (73 percent) had or were taking classes at KuC and a few (13 percent) had taught a class or workshop as either adjunct or continuing education instructor (Table 3). Understandably, those with experience with KuC programs and events offered the most suggestions for change and improvement. Comments included general suggestions for more classes, certificates, and degrees in academic and vocational tracks. Others were specific suggestions for expansion of existing programs. For example, some noted that KuC currently offers certificates and applied associate degrees in applied business and accounting and recommended building on these to offer a bachelors degree in Business Administration and Accounting. There were no suggestions to drop programs. Approximately a quarter of respondents requested more information about KuC programs and services. The summary of services list (Appendix 1) was mailed or faxed to them.

<b>Table 3. Number and Percent of Responses about Experience at KuC.*</b>				
<b>“Have you – or are you...”</b>	<b>Responses</b>			
	<b>Yes</b>		<b>No</b>	
	<b>No.</b>	<b>Percent</b>	<b>No.</b>	<b>Percent</b>
Taken courses/offerings?	61	73	23	27
Family member taking classes?	33	39	51	61
Taken or taking a Continuing Ed classes?	26	31	58	69
Taken or taking a Distance Delivered classes?	26	31	58	69
Taught any class or workshop?	13	16	71	84
Community Partner?	14	17	70	83
In a degree program?	7	8	77	92
Other experience?	7	8	77	92

\*Total number of surveys: 84.

Ratings for most programs and services at KuC were positive or “average” (Table 4). Programs and events at the Cultural Center received the most positive ratings—67 percent were “very good” or “good”, followed by ratings for Student Services at 58 percent as “very good” or “good.” Positive (combined “very good” and “good”) ratings for remainder of programs ranged between 13 to 51 percent. In all cases of programs receiving less than 50 percent positive ratings, respondents said they did not know about the programs enough to rate them. For example, the Marine Advisory Program is a relatively new presence at KuC and 86 percent of respondents claimed ignorance of that program (Table 4).

Ratings for buildings other than the YPCC underscored their perceived and real need for change—the highest ratings, other than ignorance about whether change was needed—were for improvement or replacement (Table 5). Fifty-two percent (52 percent) of respondents rated

the Main Building as needing improvement or replacement, followed by the YLC (31 percent), and lastly by Sackett Hall (26 percent). It is understandable that most regional residents would not know enough about Sackett Hall or the YLC building to rate either, hence they received the highest number of “Don’t Know” responses when asked about possible changes. Most suggestions were to increase the size or number of various aspects of the buildings, such as offices and classrooms, and to add specialized space and classrooms (e.g. better computer lab, campus gym or fitness room, more functional kitchen at the YPCC, and better reception area). There were some suggestions to improve the grounds of the campus by landscaping and paving the parking lot.

**Table 4. Number and Percent of Ratings of Services and Programs at Kuskokwim Campus, 2005-05.\***

Service/Program	Rating									
	Very Good		Good		Average		Poor		Don't Know	
	No.	%	No.	%	No.	%	No.	%	No.	%
Student Services	8	9	40	48	5	6	0	0	32	38
On-Campus Academic Classes	14	17	26	31	2	2	0	0	41	49
Distance-Delivered Classes	14	17	22	26	4	5	0	0	44	52
Continuing Education Classes	15	18	26	30	3	4	1	1	39	46
Programs/events at Cultural Center	25	30	31	37	1	1	1	1	26	31
Library	16	19	27	32	10	12	1	1	30	36
Adult Basic Education	17	20	23	27	44	52	0	0	0	0
Cooperative Extension Service	8	9	20	24	6	7	1	1	49	58
Marine Advisory Program	2	2	9	11	0	0	0	0	72	86

\*Total number of surveys: 84.

**Table 5. Number and Percent of Ratings of Buildings at Kuskokwim Campus, 2006.\***

Building	Rating									
	Very Good		Good Enough		Needs Improvement		Needs Replacement		Don't Know	
	No.	%	No.	%	No.	%	No.	%	No.	%
Main Campus	4	5	9	11	35	42	8	10	28	33
Sackett Hall (dorm)	3	4	13	15	21	25	1	1	46	55
YLC-Cooperative Extension Building	4	5	4	1	22	26	4	5	53	63

\*Total number of surveys: 84.

***Discussion from Survey Results and Master Planning Committee***

The remainder of the text of this plan includes comments from surveys as well as discussion points from meetings of the KuC Master Planning Committee. Many of the points and observations from these different sources paralleled and supported one another.

The library and museum in the YPCC received the most positive comments in terms of all campus building, but even they were thought to have inadequate space overall for current needs. In particular, the library was viewed as “too small.” The layout of the YPCC made it difficult to effectively and securely offer adequate library service to the public, primarily because the public restrooms were outside of the library and required the entire building be open to the public during extended library hours. This exposed the entire building to vandalism and youthful mischief that was difficult to monitor because of the layout of the library.

Sackett Hall has not been truly overflowing since the 2000-01 academic year, however recent trends have shown increasing enrollment by students who require resident housing to attend KuC. The new director at KuC has made advising and recruiting efforts a high priority by devoting Fund 1 money to those positions. This has already had proven positive results: there was an increase in students at the dorm between the fall 2005 and spring 2006 semester—usually



there is a drop in students between those semesters.

KuC has had requests for married student or family housing for students with families from villages. Usually, students with families either find their own housing in Bethel, arrange to have childcare with extended family in their home village, or delay college until their children are older. Ideally having a small number of family housing units for such students while they attend KuC would respond to this need.

In fall 2004, KuC received an NSF-TCUP grant to enhance and support student academic and professional interests in science, technology, engineering and mathematics (STEM) fields. The objectives were to provide greater access to quality STE M education in the Y-K Delta by hiring faculty in those fields and to improve academic and professional success of STEM students by forming an Alaska Native Science and Engineering Program (ANSEP) chapter at KuC. In order to offer a local option and focus of interest for science students, KuC is developing a certificate degree in ethnobotany to offer an emphasis area in the college's AAS degree.

In fall 2005 KuC received a one-time Title III renovation grant to expand science laboratory facilities to be completed by August 2006. This lab expansion will allow increased science course and lab offerings in the fall semester. This expansion will further the campus goal to maintain and enhance educational excellence in STEM fields by continuing programs and services to students and the community.

As more effective partnerships are forged with community and regional entities, their space becomes accessible for use by KuC and its programs. The Yuut Elitnaurviat (People's Learning Center) is a case in point and it boasts nine regional partners. KuC is a key partner in this center, which is a new regional vocational and technical school serving high-school and adult learners. At full implementation, this project will serve 250 learners in a residential setting via a \$30 million facility. Several major career pathways are currently targeted including early childhood education, information technology, construction trades, allied and behavioral health, business, transportation, and process technology.



# Appendix

# A3



**Kuskokwim Campus  
Bethel, Alaska**

**University  
of  
Alaska  
Fairbanks  
2006**





## KUSKOKWIM CAMPUS (KuC) UAF COMMUNITY POPULATION DATA of the REGION

Community	Pop 2005	Pop_2000	Pop_1990	Pop_1980	Pop_1970
Akiachak	644	585	481	438	312
Akiak	378	309	285	198	171
Alakanuk	678	652	544	522	265
Andreafsky	145	127	410	107	0
Aniak	528	572	540	341	205
Atmautluak	304	294	258	219	0
Bethel	5960	5471	4674	3576	2416
Bill Moore's Slough	0	0	n/a	n/a	n/a
Chefornak	457	394	320	230	146
Chevak	916	765	598	466	387
Chuathbaluk	93	119	97	105	94
Crooked Creek	145	137	106	108	59
Eek	291	291	280	280	254
Emmonak	740	767	642	567	439
Georgetown	3	3	0	6	0
Goodnews Bay	238	238	230	230	241
Hamilton	0	0	0	0	0
Hooper Bay	1133	1014	845	627	490
Kasigluk	534	543	425	342	0
Kipnuk	688	644	470	371	325
Kongiganak	167	359	294	239	190
Kotlik	609	591	461	293	228
Kwethluk	695	713	558	454	408
Kwigillingok	361	338	278	354	148
Lime Village	28	46	42	48	25
Lower Kalskag	252	267	291	246	183
Marshall	370	349	273	262	175
Mekoryuk	192	210	177	160	249
Mountain Village	786	755	674	583	419
Napaimute	0	0	3	4	0
Napakiak	373	353	318	262	0
Napaskiak	428	390	328	244	259
Newtok	315	321	207	131	114
Nightmute	234	208	153	119	127
Nunam Iqua	204	164	109	103	125
Nunapitchuk	516	466	378	299	526

Community	Pop 2005	Pop_2000	Pop_1990	Pop_1980	Pop_1970
Ohogamiut	0	0	0	0	0
Paimiut	2	2	0	0	0
Pilot Station	565	550	463	325	290
Pitkas Point	103	125	135	88	70
Platinum	38	41	64	55	55
Quinhagak	642	555	501	412	340
Red Devil	36	48	53	39	81
Russian Mission	329	296	246	169	146
Saint Mary's	570	500	441	382	384
Scammon Bay	509	465	343	250	166
Sleetmute	92	100	106	107	109
Stony River	42	61	51	62	74
Toksook Bay	596	532	420	333	257
Tuluksak	466	428	358	236	195
Tuntutuliak	399	370	300	216	158
Tununak	328	325	316	298	274
Umkumiute	0	0	0	0	0
Upper Kalskag	276	230	172	129	122
	24398	23083	19718	15635	11701
% change from previous decade		5.70%	17.07%	26.11%	33.62%





# Appendix

# A4



**Kuskokwim Campus  
Bethel, Alaska**

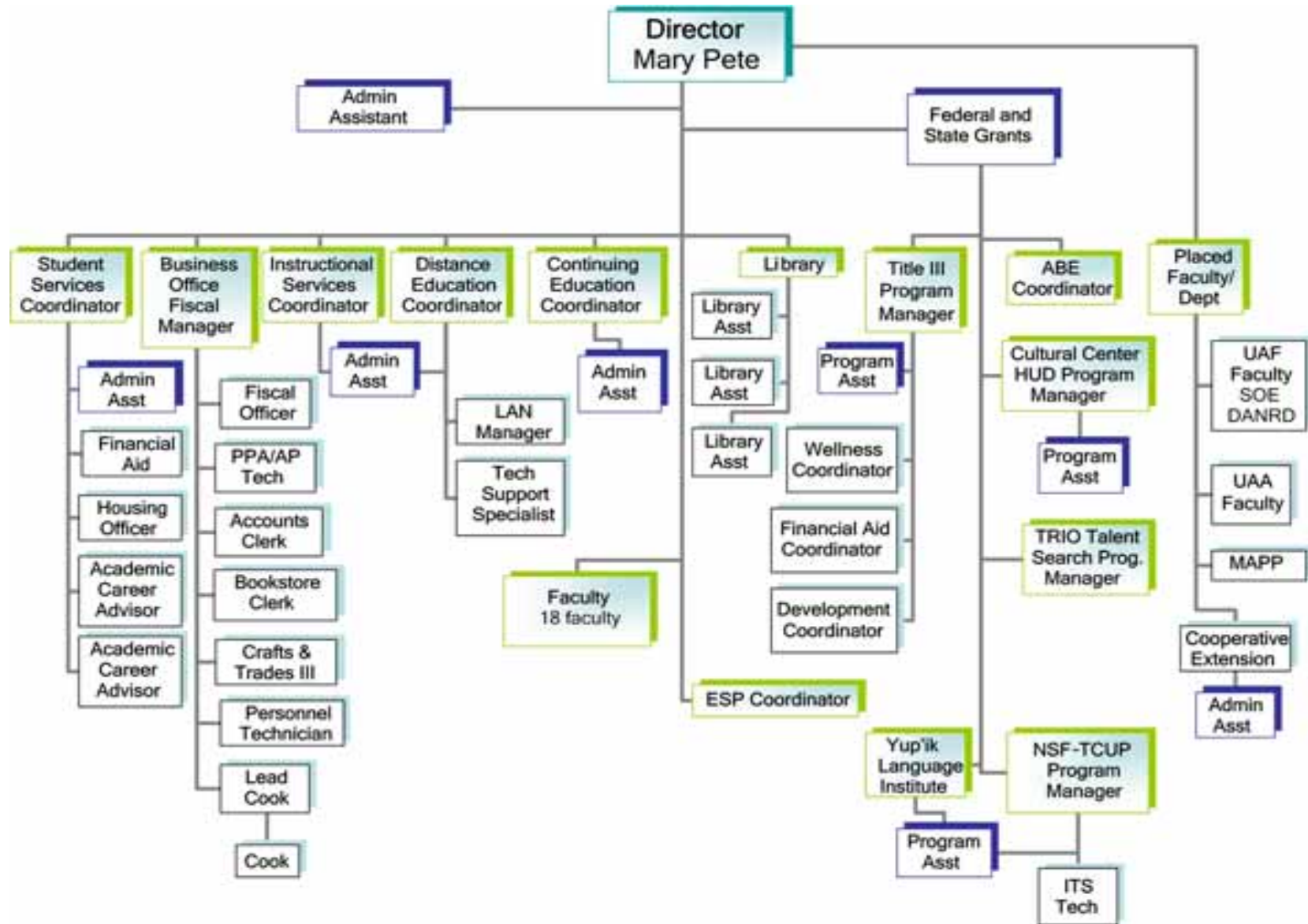
**University  
of  
Alaska  
Fairbanks  
2006**







# KUSKOKWIM CAMPUS (KuC) UAF - ORGANIZATION CHART





# Appendix

# A5



**Kuskokwim Campus  
Bethel, Alaska**

**University  
of  
Alaska  
Fairbanks  
2006**





APPENDIX - 5

**KUSKOKWIM CAMPUS (KuC) UAF - SPACE ANALYSIS**

Building Number / Room Number	Room	Function	Existing Area	Current Required Area (Spring 2006)	20 Year Future Required Area
<b>KU-Campus</b>	<b>TOTAL AREAS</b>		<b>52084</b>	<b>63270</b>	<b>78916</b>
<b>KU000-Exp</b>	<b>FUTURE ACADEMIC EXPANSION ADDITION TOTAL</b>		<b>0</b>	<b>7410</b>	<b>11030</b>
KU000-000	Circulation	Circulation		1710	2430
KU000-000	Additional Student Commons	Student Lounge			500
KU000-000	Fitness Area	Student Lounge			750
KU000-000	Staff Break Room	Staff Break Room		500	750
KU000-000	Classroom - Distance Learning	Classroom		150	150
KU000-000	Classroom - Distance Learning	Classroom		150	150
KU000-000	Classroom - Distance Learning	Classroom		150	150
KU000-000	Classroom - Distance Learning	Classroom		150	150
KU000-000	Classroom - Distance Learning	Classroom		150	150
KU000-000	Classroom - Distance Learning	Classroom		150	150
KU000-000	Classroom - Distance Learning	Classroom		150	150
KU000-000	Classroom - Distance Learning	Classroom		150	150
KU000-000	Classroom - Distance Learning	Classroom		150	150
KU000-000	Classroom - Distance Learning	Classroom		150	150
KU000-000	Classroom - Distance Learning	Classroom		150	150
KU000-000	Classroom - Multi-Use	Classroom		1000	1000
KU000-000	Classroom - Computer Lab	Classroom		1000	1000
KU000-000	Classroom - Arts	Classroom		1000	1000
KU000-000	Office - Shared (2)	Office		150	150
KU000-000	Office - Shared (2)	Office		150	150
KU000-000	Office - Shared (2)	Office		150	150
KU000-000	Office - Shared (2)	Office		150	150
KU000-000	Office - Shared (2)	Office			150
KU000-000	Office - Shared (2)	Office			150

### KUSKOKWIM CAMPUS (KuC) UAF - SPACE ANALYSIS

Building Number / Room Number	Room	Function	Existing Area	Current Required Area (Spring 2006)	20 Year Future Required Area
KU000-000	Office - Single	Office		100	100
KU000-000	Office - Single	Office		100	100
KU000-000	Office - Single	Office		100	100
KU000-000	Office - Single	Office		100	100
KU000-000	Office - Single	Office		100	100
KU000-000	Office - Single	Office		100	100
KU000-000	Office - Single	Office		100	100
KU000-000	Office - Single	Office			100
KU000-000	Office - Single	Office			100
Building Number / Room Number	Room	Function	Existing Area	Current Required Area (Spring 2006)	20 Year Future Required Area
<b>KU101</b>	<b>YUP'IK LANGUAGE CENTER TOTAL</b>		<b>1482</b>	<b>1580</b>	<b>1580</b>
KU101-000	Ext Walls	Ext Walls	114	137	137
KU101-100	Room 100	Office	212	212	212
KU101-100A	Room 100 A vest	Circulation	65	65	65
KU101-101	Room 101 Inst Office	Office	94	100	100
KU101-102	Room 102 CES Office	Office	83	100	100
KU101-103	Room 103 CES Office	Office	96	100	100
KU101-104	Room 104 Inst Office	Office	85	100	100
KU101-105	Room 105 Publav (restroom)	Bathroom	34	50	50
KU101-105A	Corridor 105 A	Circulation	50	50	50
KU101-106	Room 106 Publav	Bathroom	33	50	50
KU101-107	Room 107 U/M (Utility/Mech)	Utility	70	70	70
KU101-108	Room 108 CES Office	Office	94	94	94
KU101-109	Room 109 CES MPRM	Office	180	180	180
KU101-110	Main Corridor 110	Circulation	272	272	272

## KUSKOKWIM CAMPUS (KuC) UAF - SPACE ANALYSIS

Building Number / Room Number	Room	Function	Existing Area	Current Required Area (Spring 2006)	20 Year Future Required Area
<b>KU102</b>	<b>MAIN ACADEMIC BUILDING "PHASE 1" TOTAL</b>		<b>3400</b>	<b>3578</b>	<b>3578</b>
KU102-000	Ext Walls	Ext Walls	301	310	310
KU102-100	100 U/M	Utility	138	138	138
KU102-100A	Corridor 100A	Circulation	96	96	96
KU102-100B	Vest 100B	Circulation	43	43	43
KU102-101	101 KUTRAN OFFSV	Office	73	100	100
KU102-101A	101A Plumb	Utility	21	21	21
KU102-102	102 Cla Office	Office	82	100	100
KU102-103	103 KUIS OFFSV	Office	73	100	100
KU102-104	104 KUTRAN Office	Office	69	100	100
KU102-105	105 HUB	Utility	54	54	54
KU102-106	106 KUIS Office	Office	95	100	100
KU102-107	107 KUIS Office	Office	143	143	143
KU102-108	108 Kuss Office	Office	146	146	146
KU102-109	109 Kuss Office	Office	343	343	343
KU102-110	110 Kuss Office	Office	77	100	100
KU102-110A	110A Corridor	Circulation	226	226	226
KU102-110B	110B Kuss Sec/R	Office	473	473	473
KU102-111	111 Kurd Office	Office	84	100	100
KU102-112	112 KUIS office	Office	102	100	100
KU102-112A	112A Corridor	Circulation	93	100	100
KU102-113	113 Kuvotec Office	Office	79	100	100
KU102-114	114 SOE Office	Office	103	100	100
KU102-115	115 KUTRAN Office	Office	250	250	250
KU102-116	116 KUIS Office	Office	101	100	100
KU102-117	117 KUIS Office	Office	135	135	135

### KUSKOKWIM CAMPUS (KuC) UAF - SPACE ANALYSIS

Building Number / Room Number	Room	Function	Existing Area	Current Required Area (Spring 2006)	20 Year Future Required Area
<b>KU103</b>	<b>MAIN ACADEMIC BUILDING "PHASE 2" TOTAL</b>		<b>6271</b>	<b>6944</b>	<b>6944</b>
KU103-000	Ext Walls	Ext Walls	432	602	602
KU103-110A	110A Kuss Office	Storage	49	49	49
KU103-118	118 KUIS Class	Classroom	1047	1047	1047
KU103-119	119 Publav	Bathroom	116	150	150
KU103-119A	119A Plumb	Utility	20	20	20
KU103-120	120 Publav	Bathroom	119	150	150
KU103-120A	120A Lobby	Circulation	126	126	126
KU103-120B	120B Vest	Circulation	94	94	94
KU103-120C	120C Corridor	Circulation	147	147	147
KU103-120D	120D KUIS Sec/R	Office	160	250	250
KU103-121	121 Kuvotec CMP-O	Classroom-Computer	764	764	764
KU103-122	122 KUIS Office	Office	217	217	217
KU103-123	123 KUIS Office	Office	92	100	100
KU103-124	124 KUIS Office	Office	103	100	100
KU103-125	125 KUIS Office	Office	158	158	158
KU103-125A	125A Corridor	Circulation	420	420	420
KU103-126	126 Janitor	Utility	33	33	33
KU103-127	127 KUDIR Office	Office	124	124	124
KU103-128	128 Kuss Lounge	Activity	129	250	250
KU103-129	129 Kuss Office	Office	190	190	190
KU103-130	130 Ku SS Student Lounge	Student Lounge	278	500	500
KU103-131	131 U/M	Utility	119	119	119
KU103-131A	131A Vest	Circulation	44	44	44
KU103-132	132 KUIS Classroom	Classroom	326	326	326
KU103-132A	132A Corridor	Circulation	197	197	197
KU103-133	133 KUIS CMP-O	Classroom-Computer	447	447	447
KU103-134	134 KUIS Physics	Classroom	320	320	320



## KUSKOKWIM CAMPUS (KuC) UAF - SPACE ANALYSIS

Building Number / Room Number	Room	Function	Existing Area	Current Required Area (Spring 2006)	20 Year Future Required Area
<b>KU104</b>	<b>MAIN ACADEMIC BUILDING "PHASE 3" TOTAL</b>		<b>12650</b>	<b>13006</b>	<b>13006</b>
<b>KU104</b>	<b>Lower Level</b>		<b>10698</b>		
<b>KU104</b>	<b>Upper Level</b>		<b>1952</b>		
KU104-001	Ext Walls	Ext Walls	715	1128	1128
KU104-002	Ext Walls	Ext Walls	145		
KU104-135	135 KUIS Classroom	Classroom	266	266	266
KU104-135A	135A Corridor	Circulation	277	277	277
KU104-136	136 KUIS Lab Connect	Classroom	186	186	186
KU104-137	137 KUIS Classroom	Classroom	311	311	311
KU104-138	138 KUIS CLSLB	Classroom-Lab	438	438	438
KU104-139	139 KUIS Classroom	Classroom	308	308	308
KU104-140	140 Publav	Bathroom	129	150	150
KU104-140A	140A Lobby	Circulation	374	374	374
KU104-140B	140B Vest	Circulation	71	71	71
KU104-141	141 Publav	Bathroom	173	200	200
KU104-142	142 Janitor	Utility	28	28	28
KU104-142A	142A Corridor	Circulation	69	69	69
KU104-143	143 PUBLAV	Bathroom	93	100	100
KU104-143A	143A P LAV	Bathroom	25	50	50
KU104-144	144 U/M	Utility	167	167	167
KU104-145	145 KUIS Office	Office	202	202	202
KU104-145A	145A Corridor	Circulation	64	64	64
KU104-146	146 KUIS Classroom	Classroom	521	521	521
KU104-147	147 KUIS MEDPRSV	Utility	131	131	131
KU104-147A	147A KUIS MEDPR	Storage	89	89	89
KU104-147B	147B KUIS MEDPR	Storage	222	222	222
KU104-148	148 KUIS Office	Office	105	105	105
KU104-149	149 KUIS Classroom	Classroom	3145	3145	3145
KU104-150	150 Kumain Shop	Activity	1302	1302	1302
KU104-151	151 Kumain Shop	Activity	331	331	331

APPENDIX - 5 (cont.)

KUSKOKWIM CAMPUS (KuC) UAF - SPACE ANALYSIS

Building Number / Room Number	Room	Function	Existing Area	Current Required Area (Spring 2006)	20 Year Future Required Area
KU104-152	152 Kumain Office	Office	237	237	237
KU104-153	153 Kumain SHPSV	Storage	86	86	86
KU104-154	154 KUIS Office	Office	92	100	100
KU104-155	155 KUIS MERCH	Bookstore	488	488	488
KU104-155A	155A KUIS MERSV	Storage	53	53	53
KU104-200	200 KUIS CENSV	Circulation	422	422	422
KU104-201	201 U/M	Utility	356	356	356
KU104-202	202 KUIS Office	Office	405	405	405
KU104-203	203 KUIS CMP-O	Classroom-Computer	624	624	624

## KUSKOKWIM CAMPUS (KuC) UAF - SPACE ANALYSIS

Building Number / Room Number	Room	Function	Existing Area	Current Required Area (Spring 2006)	20 Year Future Required Area
<b>KU105</b>	<b>SACKETT HALL (DORM) TOTAL</b>		<b>10575</b>	<b>10575</b>	<b>10575</b>
<b>KU105</b>	<b>1st Floor</b>	<b>5676</b>			
<b>KU105</b>	<b>2nd Floor</b>	<b>4899</b>			
KU105-001	Ext Walls	Ext Walls	368	368	368
KU105-002	Ext Walls	Ext Walls	522	522	522
KU105-100	100 Vest	Circulation	72	72	72
KU105-100A	100A 2 Bedrooms	Dorm	574	574	574
KU105-100B	100B 2 Bedrooms	Dorm	565	565	565
KU105-100C	100C 2 Bedrooms	Dorm	471	471	471
KU105-100D	100D 2 Bedrooms	Dorm	471	471	471
KU105-101	101 Corridor	Circulation	148	148	148
KU105-102	102 Corridor	Circulation	23	23	23
KU105-103	103 Publav	Bathroom	57	57	57
KU105-104	104 Janitor	Utility	34	34	34
KU105-105	105 Publav	Bathroom	49	49	49
KU105-106	106 KUDorm Laundry	Activity-Laundry	148	148	148
KU105-107	107 Kuss Office	Office	129	129	129
KU105-108	108 Vest	Circulation	79	79	79
KU105-109	109 Electrical	Utility	13	13	13
KU105-110	110 U/M	Utility	176	176	176
KU105-111	111 Kuss Lounge	Activity	1505	1505	1505
KU105-112	112 Kudorm DRMSV	Dinning	296	296	296
KU105-113	113 Kudorm DRMSV	Kitchen	241	241	241
KU105-114	114 Kudorm DRMSV	Storage	75	75	75
KU105-115	115 U/M	Utility	31	31	31
KU105-115A	115A Shaft	Utility	12	12	12
KU105-116	116 Stair	Circulation	50	50	50
KU105-117	117 Stair	Circulation	70	70	70
KU105-118	118 Kudorm DRMSV	Storage-Utility	19	19	19
KU105-200	200 Kudorm DRMSV	Utility	128	128	128
KU105-200E	200E 2 Bedrooms	Dorm	476	476	476

### KUSKOKWIM CAMPUS (KuC) UAF - SPACE ANALYSIS

Building Number / Room Number	Room	Function	Existing Area	Current Required Area (Spring 2006)	20 Year Future Required Area
KU105-200F	200F 2 Bedrooms	Dorm	455	455	455
KU105-200G	200G 2 Bedrooms	Dorm	463	463	463
KU105-200H	200H 2 Bedrooms	Dorm	503	503	503
KU105-200I	200I 2 Bedrooms	Dorm	471	471	471
KU105-200J	200J 2 Bedrooms	Dorm	467	467	467
KU105-201	Corridors (All Circulation)	Circulation	708	708	708
KU105-206	206 1 Bedroom	Dorm	234	234	234
KU105-300	300 U/M	Utility	472	472	472

## KUSKOKWIM CAMPUS (KuC) UAF - SPACE ANALYSIS

Building Number / Room Number	Room	Function	Existing Area	Current Required Area (Spring 2006)	20 Year Future Required Area
<b>KU105-Exp</b>	<b>FUTURE MARRIED STUDENT HOUSING EXPANSION TOTAL</b>		<b>0</b>	<b>0</b>	<b>10575</b>
KU105-Exp-000	Ext Walls	Ext Walls			368
KU105-Exp-000	Ext Walls	Ext Walls			522
KU105-Exp-000	100 Vest	Circulation			72
KU105-Exp-000	100A 2 Bedrooms	Dorm			574
KU105-Exp-000	100B 2 Bedrooms	Dorm			565
KU105-Exp-000	100C 2 Bedrooms	Dorm			471
KU105-Exp-000	100D 2 Bedrooms	Dorm			471
KU105-Exp-000	101 Corridor	Circulation			148
KU105-Exp-000	102 Corridor	Circulation			23
KU105-Exp-000	103 Publav	Bathroom			57
KU105-Exp-000	104 Janitor	Utility			34
KU105-Exp-000	105 Publav	Bathroom			49
KU105-Exp-000	106 KUDorm Laundry	Activity-Laundry			148
KU105-Exp-000	107 Kuss Office	Office			129
KU105-Exp-000	108 Vest	Circulation			79
KU105-Exp-000	109 Electrical	Utility			13
KU105-Exp-000	110 U/M	Utility			176
KU105-Exp-000	111 Kuss Lounge	Activity			1505
KU105-Exp-000	112 Kudorm DRMSV	Dinning			296
KU105-Exp-000	113 Kudorm DRMSV	Kitchen			241
KU105-Exp-000	114 Kudorm DRMSV	Storage			75
KU105-Exp-000	115 U/M	Utility			31
KU105-Exp-000	115A Shaft	Utility			12
KU105-Exp-000	116 Stair	Circulation			50
KU105-Exp-000	117 Stair	Circulation			70
KU105-Exp-000	118 Kudorm DRMSV	Storage-Utility			19
KU105-Exp-000	200 Kudorm DRMSV	Utility			128
KU105-Exp-000	200E 2 Bedrooms	Dorm			476
KU105-Exp-000	200F 2 Bedrooms	Dorm			455
KU105-Exp-000	200G 2 Bedrooms	Dorm			463

### KUSKOKWIM CAMPUS (KuC) UAF - SPACE ANALYSIS

Building Number / Room Number	Room	Function	Existing Area	Current Required Area (Spring 2006)	20 Year Future Required Area
KU105-Exp-000	200H 2 Bedrooms	Dorm			503
KU105-Exp-000	200I 2 Bedrooms	Dorm			471
KU105-Exp-000	200J 2 Bedrooms	Dorm			467
KU105-Exp-000	Corridors (All Circulation)	Circulation			708
KU105-Exp-000	206 1 Bedroom	Dorm			234
KU105-Exp-000	300 U/M	Utility			472

## KUSKOKWIM CAMPUS (KuC) UAF - SPACE ANALYSIS

Building Number / Room Number	Room	Function	Existing Area	Current Required Area (Spring 2006)	20 Year Future Required Area
<b>KU106</b>	<b>YUPIIT PICIRYARAIT CULTURAL CENTER TOTAL</b>		<b>17572</b>	<b>20042</b>	<b>21493</b>
<b>KU106</b>	<b>1st Floor</b>		<b>15641</b>		
<b>KU106</b>	<b>2nd Floor</b>		<b>1931</b>		
KU106-001	Ext Walls	Ext Walls	1120	1739	1865
KU106-002	Ext Walls	Ext Walls	226	226	226
KU106-100U1	100U1 U/M	Utility	93	93	93
KU106-101	101 Vest	Circulation	98	98	98
KU106-102	102 Corridor	Circulation	1122	1122	1122
KU106-103	103 KU Library front desk	Library	288	288	288
KU106-104	104 KULIB LIBPR	Library	397	397	800
KU106-105	105 KULIB Stack	Library	476	476	950
KU106-106	106 KULIB Stack	Library	452	452	900
KU106-107	107 Library Office	Library	108	108	108
KU106-108	108 Library Stack	Library	1849	3700	3700
KU106-109	109 Library Office	Library	86	86	86
KU106-110	110 Janitor	Utility	48	48	48
KU106-111	111 Publav (restroom)	Bathroom	307	307	307
KU106-112	112 Publav (restroom)	Bathroom	209	209	209
KU106-113	113 Corridor	Circulation	187	187	187
KU106-114	114 Vest	Circulation	80	80	80
KU106-115	115 KUPHPL Office	Office	136	136	136
KU106-116	116 KUDIR Office	Office	136	136	136
KU106-117	117 Kumain MERCH	Museum	324	324	324
KU106-118	118 Kumain Exhibition	Museum	410	410	410
KU106-119	119 Kumain Exhibition	Museum	566	566	566
KU106-120	120 Kumain Exhibition	Museum	410	410	410
KU106-121	121 Kumain EXHSTG	Museum	333	333	333
KU106-122	122 Vest	Circulation	140	140	140
KU106-123	123 Kumain EXHSV	Museum	306	306	306
KU106-124	124 KULIB LIBSTG	Storage	358	358	358
KU106-125	125 Stair	Circulation	21	21	21
KU106-126	126 Kumain CENSV	Circulation	33	33	33

## KUSKOKWIM CAMPUS (KuC) UAF - SUMMARY SPACE ANALYSIS

Building Number / Room Number	Room	Function	Existing Area	Current Required Area (Spring 2006)	20 Year Future Required Area
KU106-127	127 Kumain FDFSV	Storage	57	57	57
KU106-128	128 Kumain FDFSV	Kitchen	156	156	156
KU106-129	129 Kumain ASMSV	Storage	122	122	122
KU106-130	130 U/M	Utility	301	301	301
KU106-131	131 Kumain Assembly	Assembly	4288	4288	4288
KU106-132	132 Kumain ASMSV	Utility	51	51	51
KU106-133	133 Kumain ASMSV	Utility	52	52	52
KU106-134	134 Vest	Circulation	48	48	48
KU106-135	135 KULIB ASMSV	Utility	399	399	399
KU106-136	136 Vest	Circulation	48	48	48
KU106-137	137 KULIB LIBSTG	Utility	26	26	26
KU106-201	201 U/M	Utility	911	911	911
KU106-202	202 Elec	Utility	63	63	63
KU106-203	203 Hub	Utility	48	48	48
KU106-204	204 U/M	Utility	683	683	683

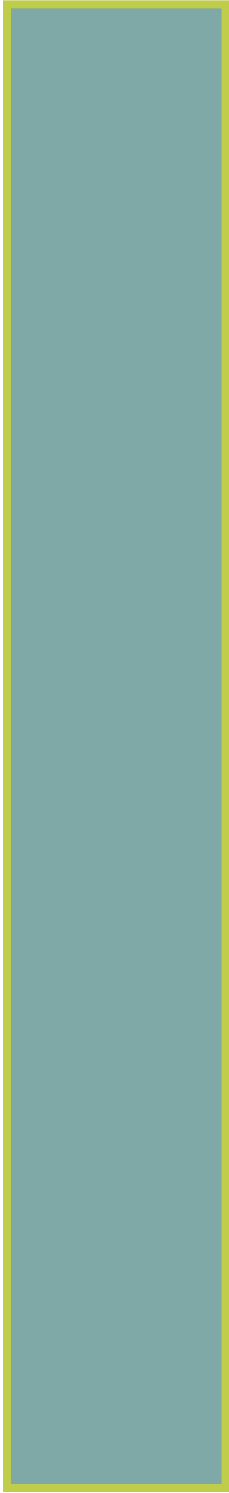


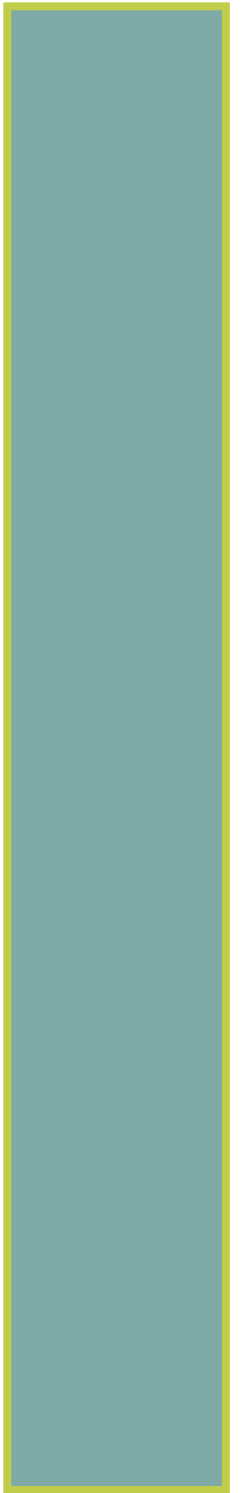
### KUSKOKWIM CAMPUS (KuC) UAF - SPACE ANALYSIS

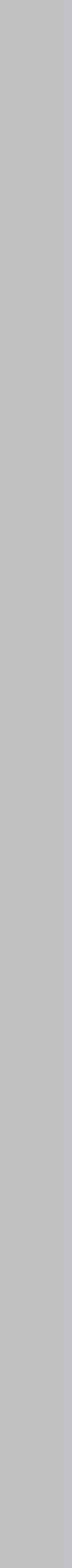
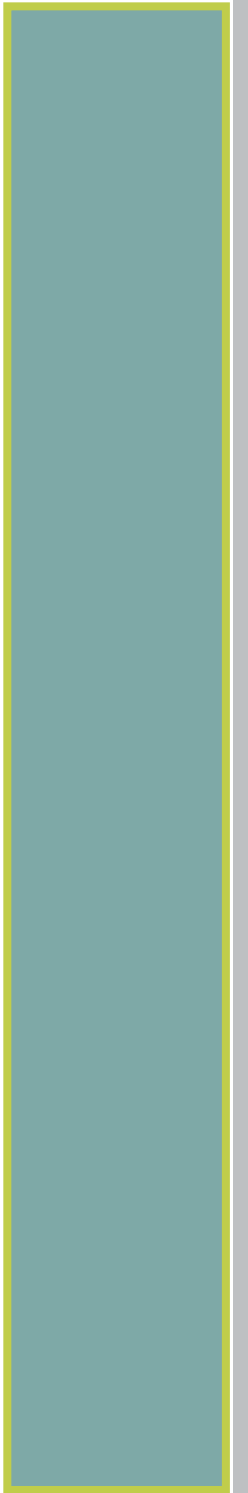
Building Number / Room Number	Room	Function	Existing Area	Current Required Area (Spring 2006)	20 Year Future Required Area
KU107	REFRIGERATOR / FREEZER TOTAL		134	134	134
KU107-101	Freezer 101	Utility	134	134	134

### KUSKOKWIM CAMPUS (KuC) UAF - SUMMARY SPACE ANALYSIS

Building Number	Building Name	Existing Area	Current Required Area (Spring 2006)	20 Year Future Required Area
KU-Campus	TOTAL AREAS	52084	63270	78916
KU000-Exp	FUTURE ACADEMIC EXPANSION ADDITION TOTAL	0	7410	11030
KU101	YUP'IK LANGUAGE CENTER TOTAL	1482	1580	1580
KU102	MAIN ACADEMIC BUILDING "PHASE 1" TOTAL	3400	3578	3578
KU103	MAIN ACADEMIC BUILDING "PHASE 2" TOTAL	6271	6944	6944
KU104	MAIN ACADEMIC BUILDING "PHASE 3" TOTAL	12650	13006	13006
KU105	SACKETT HALL (DORM) TOTAL	10575	10575	10575
KU105-Exp	FUTURE MARRIED STUDENT HOUSING EXPANSION TOTAL	0	0	10575
KU106	YUPIIT PICIRYARAIT CULTURAL CENTER TOTAL	17572	20042	21493
KU107	REFRIGERATOR / FREEZER TOTAL	134	134	134









***Kuskokwim Campus Master Plan***

University of Alaska Fairbanks  
2006